

BSA

Installation Guide



Installation tools and information required



Hammer Drill
with Masonry Drill Bit



Tape Measure



Trowel



Lump Hammer



Spirit Level



Mortar



PPE



Construction Issue Drawings



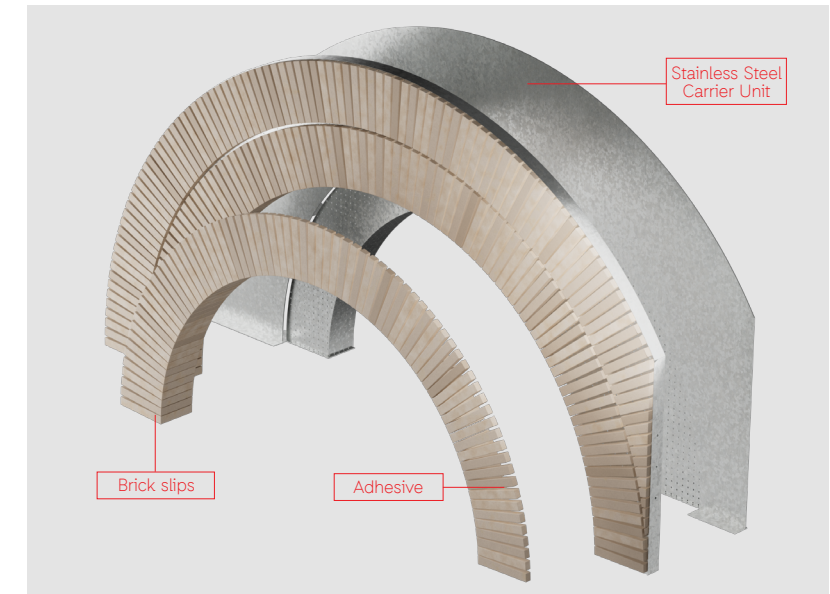
Mechanical Lifting Device

Introduction

IG's Brick Slip Arches are stainless steel, prefabricated units designed to seamlessly integrate with surrounding brickwork. Each arch offers a bespoke solution tailored to a project's unique size, shape, and aesthetic requirements.

Carrier units are manufactured from 304/304L Austenitic Stainless Steel (1.4301/1.4307) and 316/316L (1.4401/1.4404) on request. Units are bonded with adhesive.

For any support required, contact our technical team support@igmss.co.uk



Safety



IG's Brick Slip Arch units are produced from sheared plates and may have sharp edges. Care must be taken when handling units and suitable workwear should be worn at all times.

You should undertake a personal risk assessment paying attention to the size and weight of the product which is clearly detailed on each product label and pallet delivered. To avoid lifting strains and product damage, all units must be lifted by mechanical means.

Do not use or install damaged Brick Slip Arch units.

Storage

Unpointed brick slips are fragile therefore Brick Slip Arch units must be stored correctly in a level and cordoned-off area so that they are visible. Care must be taken when unwrapping the delivered product. All goods must be opened and inspected immediately after delivery. Any irregularities must be reported in writing, within 5 days of delivery to IG Masonry Support.

The manufacturer recommends that the goods onsite should be covered. This cover and protective wrapping should only be removed before installation.

Disposal

The Brick Slip Arch's steel and brick components are fully recyclable, minimising waste and reducing its carbon footprint at the end of its service life.



To achieve the design capacity of a Brick Slip Arch, each unit must be installed in the correct manner.

1

Pre-installation check

All lower-level brickwork must be completed and given adequate time to cure before the installation of a Brick Slip Arch.

Note: It is recommended that Brick Slip Arch units are not pre-pointed on the ground before installing.



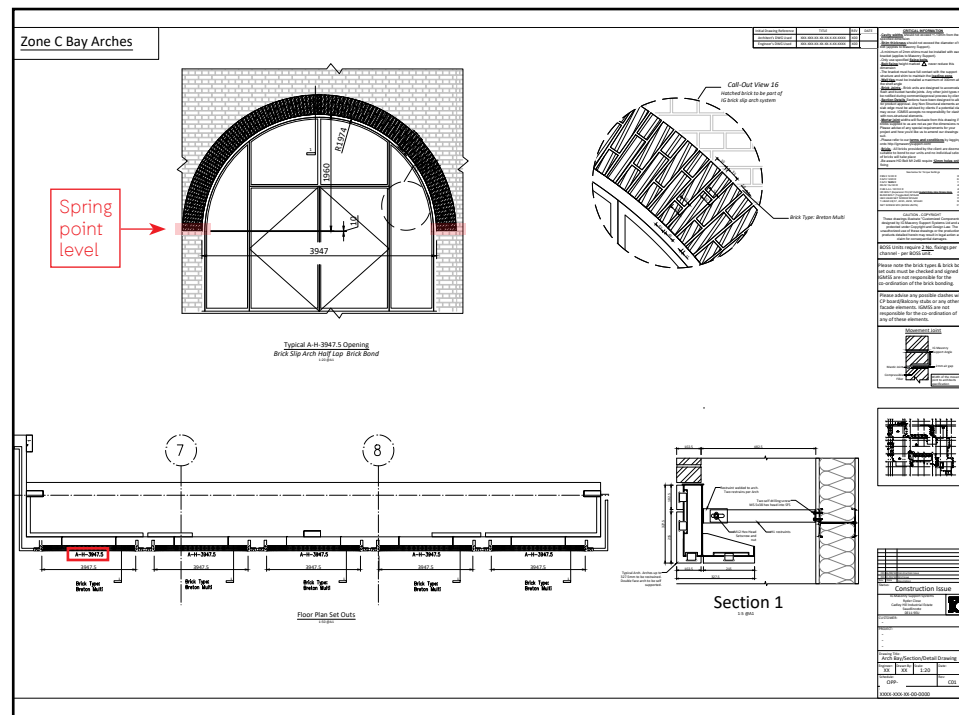
2

Review Construction Issue Drawings

Use the Construction Issue Drawings provided by IG Masonry Support to install each Brick Slip Arch unit in the correct location.

Identify the spring point level of the arch highlighted in the Construction Issue Drawing.

Note: The reference number (example highlighted in this drawing) correlates to the same reference number shown on the printed label on each unit.



3

Lift arch into position

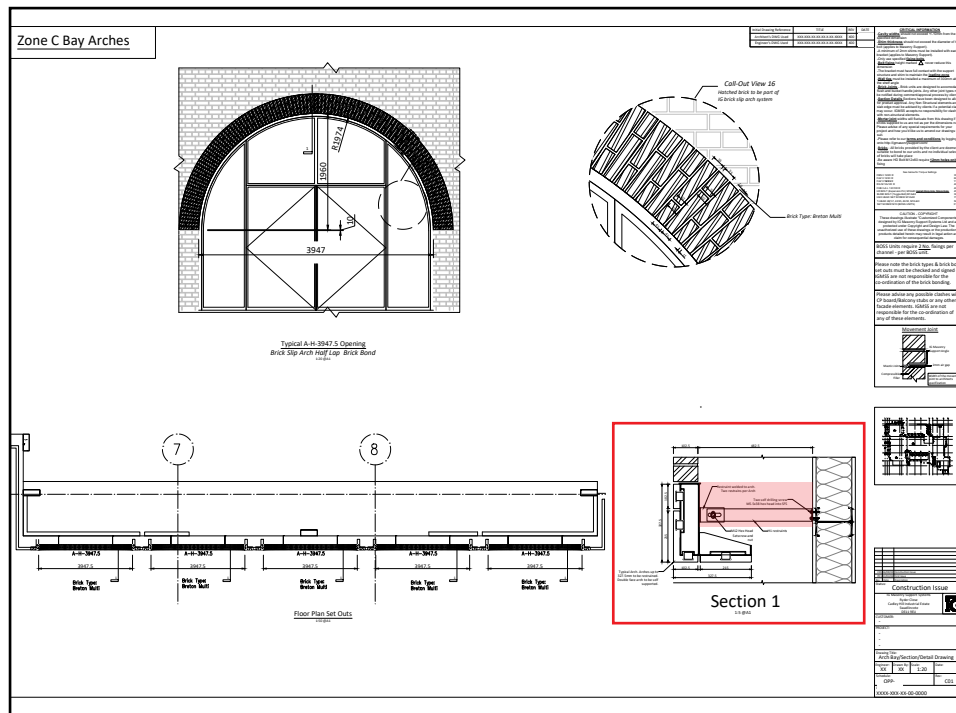


Using approved mechanical lifting equipment, hook up the lifting eyes provided on the arch and crane into position.

Note: Refer to the weight of the product noted on the pallet supplied by IG Masonry Support and use appropriate lifting equipment, ensuring full health and safety procedures are followed.

4

Identify restraining bracket position



Using the Construction Issue Drawings, identify the position that the restraining brackets have to be installed (brackets supplied by IG Masonry Support).

5

Restrain arches



Restrain the arches using the brackets provided by IG Masonry Support at the correct positions.

- A** Locate restraint position
- B** Locate fixings supplied by IG Masonry Support
- C** Use the Construction Issue Drawings to identify fixing instructions and install appropriately
- D** Use the Construction Issue Drawings to identify torque settings and torque appropriately.



Commence the build of the surrounding brickwork, following local Building Regulation requirements regarding the installation of wall ties around the arch.

Note: The brickwork on the arch and surrounding should be pointed using the same mortar to ensure consistency of colour.

This concludes the installation of the Brick Slip Arch.

The IG Masonry Support technical team are on hand to provide support when installing Brick Slip Arches. To receive support, please call **+44 (0)1283 200 157** or email **support@igmss.co.uk**

Additional installation materials



For additional installation materials, please visit **igmasonrysupport.com** or scan the QR code. Alternatively please refer to the supporting documentation supplied with this guide.

Great Britain

Cadley Hill Industrial Estate
Ryder Close, Swadlincote
South Derbyshire, DE11 9EU

T +44 (0)1283 200 157
support@igmasonrysupport.com

Ireland

Ballyreagh Industrial Estate
Sandholes Road, Cookstown
County Tyrone, BT80 9DG

T +44 (0)28 8676 0334
info@igmasonrysupport.com