

Cast-in Channel

Installation Guide



Installation tools and information required



Tape Measure



PPE



Lump Hammer



Construction Issue Drawings

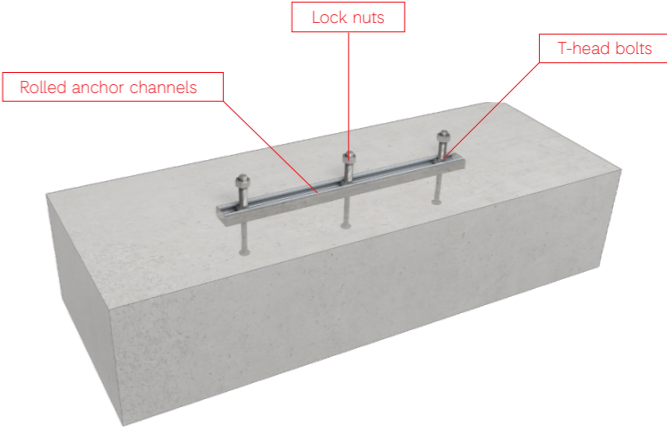


Stainless Steel Nails

Introduction

Cast-in Channels (CIC) comprise of 3050mm rolled anchor channels with swaged studs, M12 T-head bolts and lock nuts. All components are manufactured from 304 Austenitic Stainless Steel (1.4301) and 316 (1.4401).

Cast-in Channels are available in a range of sizes that will support line loads up to 27kN/m (unfactored). The continuous anchor channel embedded into concrete walls provides high adjustability and enables quick and easy installation of masonry support brackets.



Please contact our technical team for more information support@igmss.co.uk

Cast-in Channel

Safety



While Cast-in Channels are easy to handle, the components are produced from stainless steel plates and may have sharp edges. Care must be taken when handling units and suitable PPE should be worn at all times. When lifting or carrying a Cast-in Channel, you should undertake a personal risk assessment, paying attention to the size and weight of the product which is clearly detailed on each product label and pallet delivered.

Do not use or install damaged Cast-in Channels..

Storage

All factory-wrapped goods received must be stored on a level and cordoned off area so they are clearly visible. Care must be taken when opening the wrapping on the delivered product. All goods must be opened and inspected immediately after delivery. Any irregularities must be reported in writing to IG Masonry Support within 5 days of delivery.

Disposal

Cast-in Channel's stainless steel components are fully recyclable, minimising waste and reducing its carbon footprint at the end of its service life.

Review Construction Issue Drawings

Review Construction Issue Drawings provided by IG Masonry Support to aid the installation of Cast-in Channel. Pay attention to locations where channels stop and start (highlighted in Typical Corner Detail) and the level in which to install (highlighted in Section 1 and 2).

Note: CIC comes in 3050mm lengths and can be cut on site to meet requirements and following guidance (refer to Diagram 1):

- Ensure a minimum distance of 25mm between the studs and channel end.
- X size should be no less than 25mm and no more than 50mm.

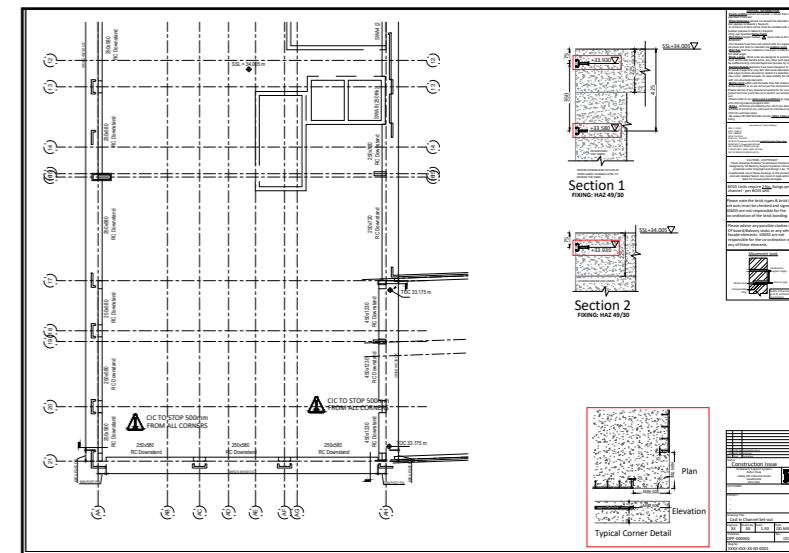
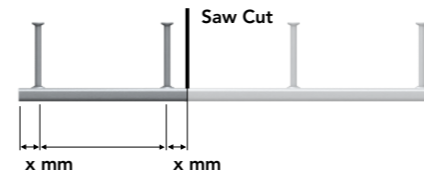


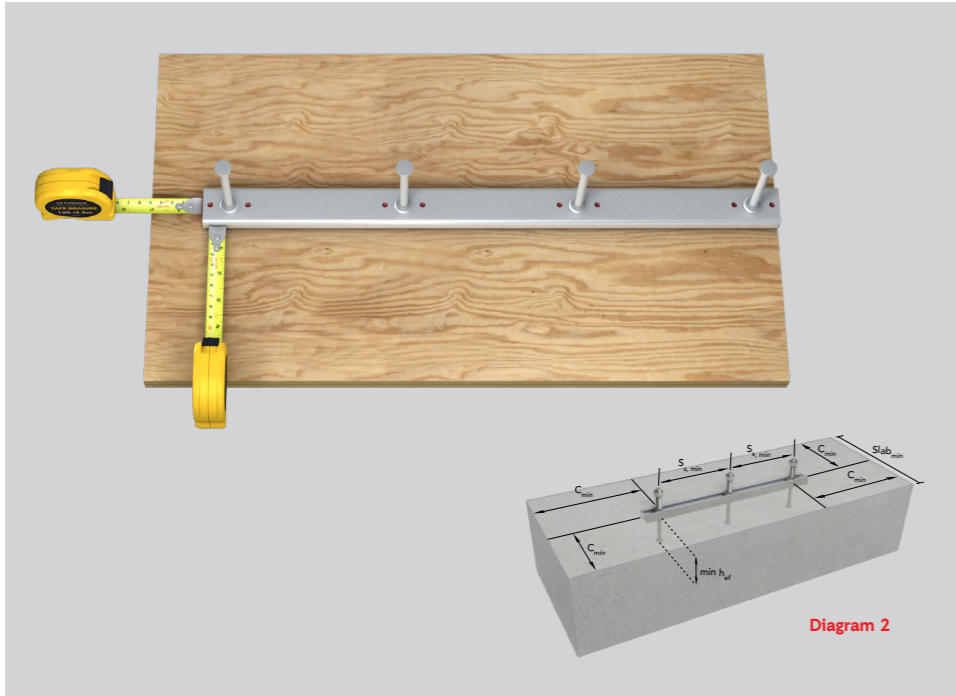
Diagram 1



To achieve the design capacity of Cast-in Channel, each system must be installed in the correct manner.

2

Position CIC on formwork



Position Cast-in Channel against formwork in desired location.

Ensure the channel has sufficient distance to the edge of concrete and is positioned at correct height within concrete (refer to Diagram 2).

Note: Do not remove foam filler until concrete has been poured (see step 6).

3

Fix CIC to formwork



Once satisfied with positioning of Cast-in Channel, fix to formwork with stainless steel nails.

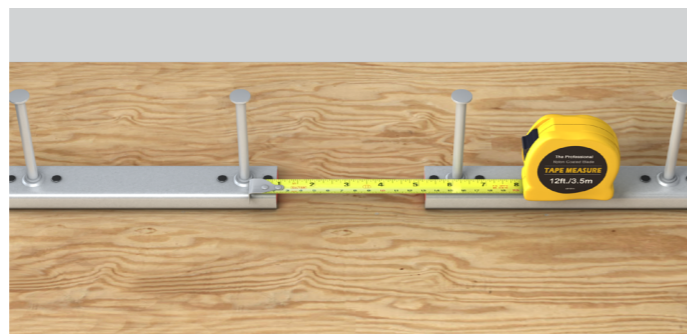
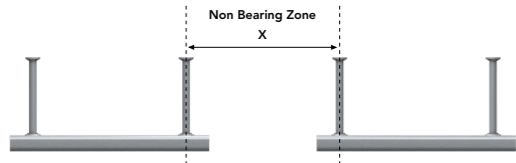
4 Position remaining CIC

Repeat step 2, positioning the rest of the Cast-in Channel in the required locations, ensuring the correct edge distances and minimum spacing between channels has been allowed for (see Table 1 and Diagram 3).

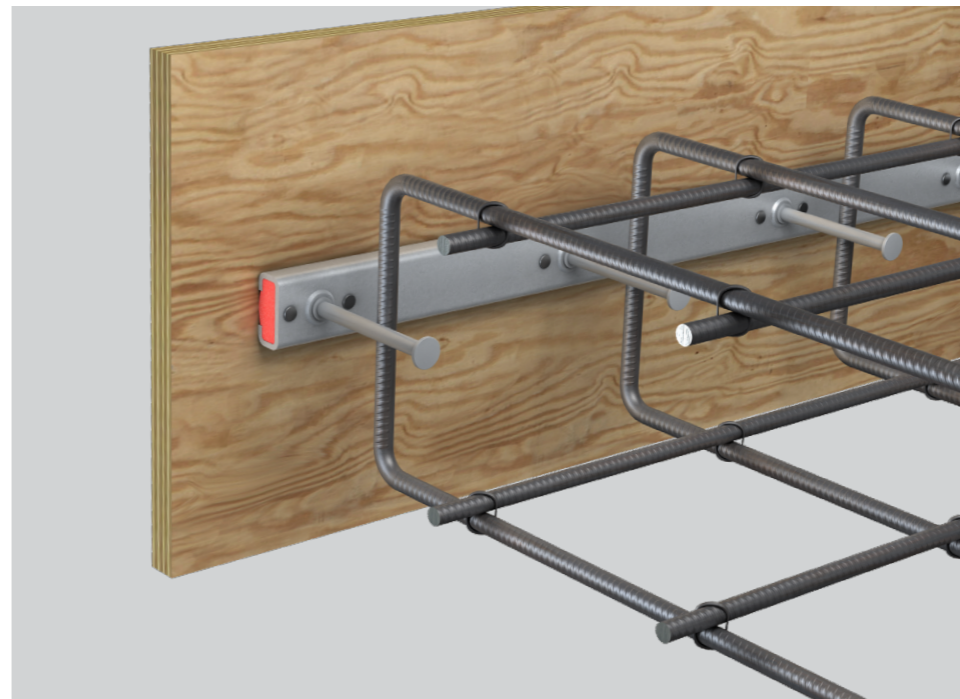
Table 1

Cast-In Channel		38/17-167	40/25	49/30
Min. Stud Distance (mm)	X	167mm	250mm	250mm

Diagram 3



5 Cast concrete into formwork

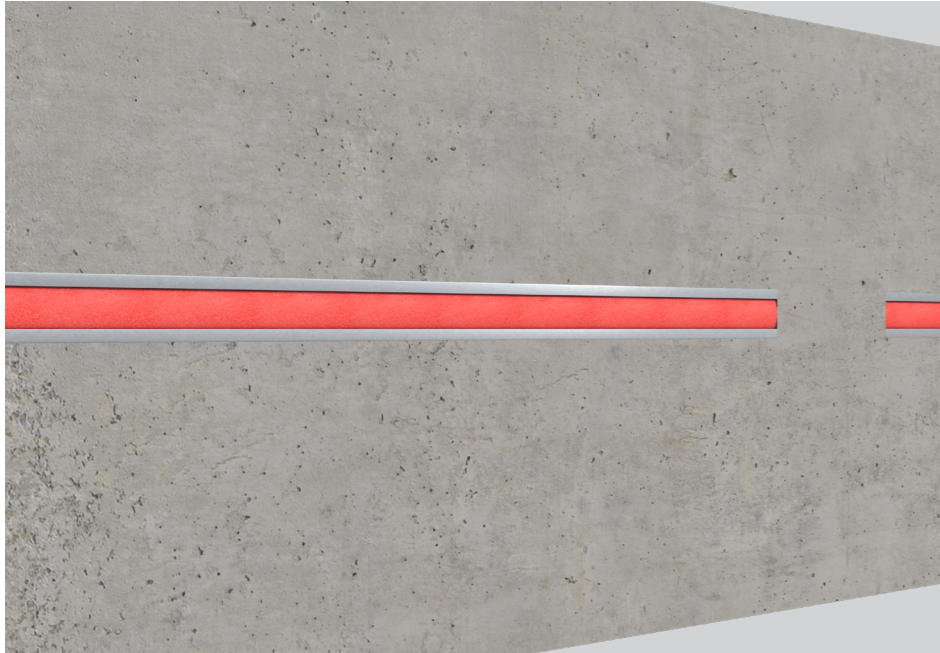


Position formwork, ensuring the Cast-in Channel has been positioned at the correct level and is horizontal.

Proceed with casting concrete into the formwork.

6

Remove formwork

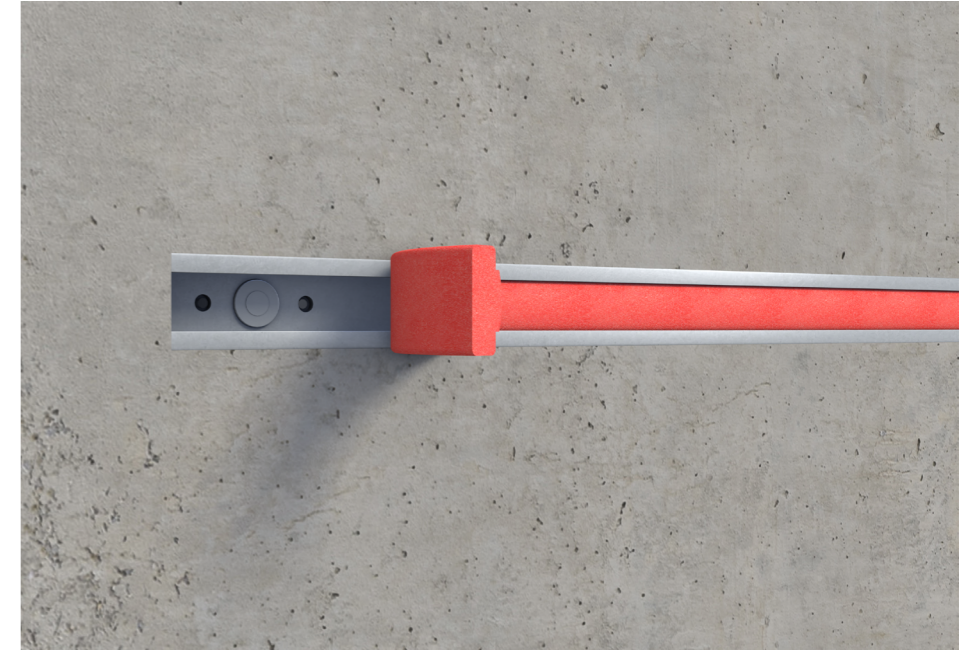


After the concrete is cured, remove formwork.

7

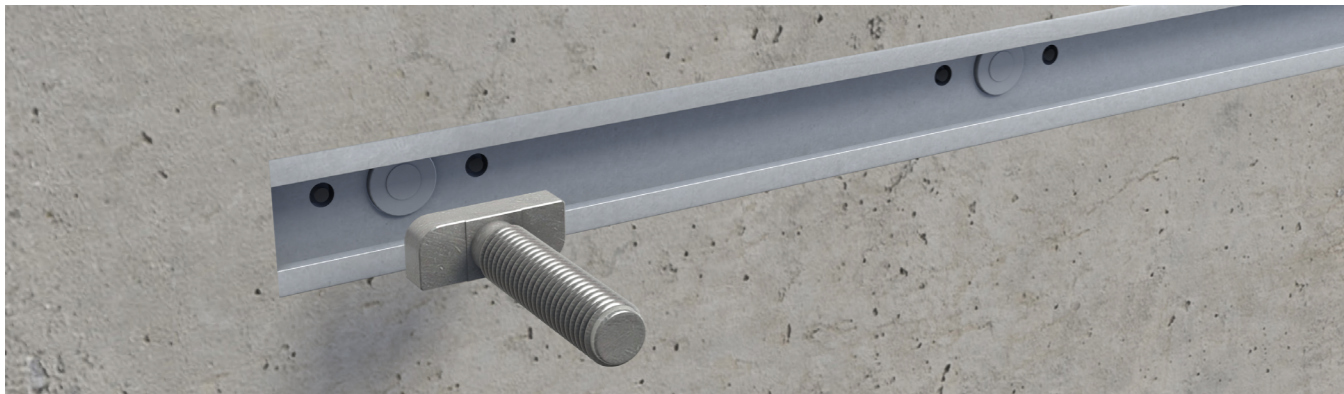
Remove foam filler

Remove protective foam filler inside the channel when ready to install masonry support.



8

Insert T-head bolt



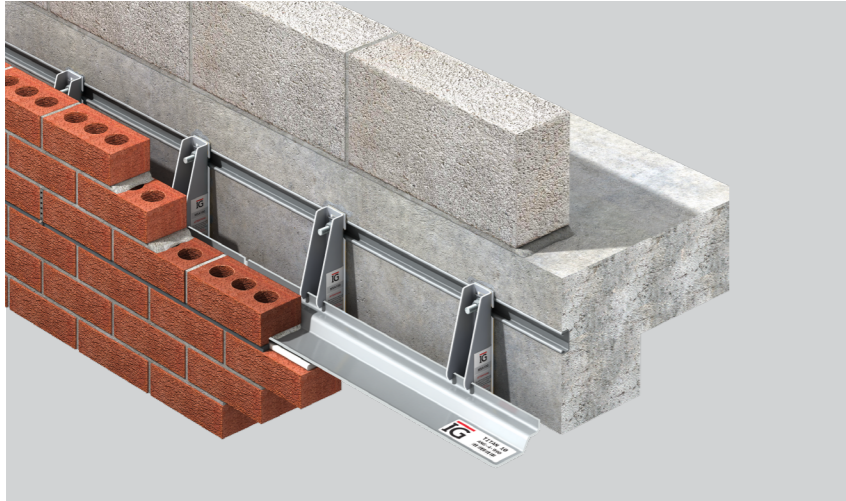
Install T-head bolt with head parallel to the channel.

9

Rotate T-head bolt into place



Once inserted, rotate T-head bolt 90° to keep fixing in place and align fixings to masonry support bracket centres.



Install masonry support system using appropriate installation guide and ensure you torque fixings to correct setting for fixing type (refer to Table 2 or fixings box).

Table 2

Cast-in Channel	T-Head Bolt Diameter (mm)	Setting Torque (Nm)
38/17-167	M12	50
40/25	M12	50
49/30*	M12	50

*49/30 Cast-in Channel is only specified in extremely high loading situations.

The IG Masonry Support technical team are on hand to provide support when installing Cast-in Channel. To receive support, please call +44 (0)1283 200 157 or email support@igmss.co.uk

Additional installation materials



For additional installation materials, please visit igmasonrysupport.com or scan the QR code. Alternatively please refer to the supporting documentation supplied with this guide.

IG | Masonry Support

Great Britain

Cadley Hill Industrial Estate
Ryder Close, Swadlincote
South Derbyshire, DE11 9EU

—
T +44 (0)1283 200 157
support@igmasonrysupport.com

Ireland

Ballyreagh Industrial Estate
Sandholes Road, Cookstown
County Tyrone, BT80 9DG

—
T +44 (0)28 8676 0334
info@igmasonrysupport.com