

# Cast-in Channel

**Installation Guide**



# Cast-in Channel

## Installation tools and information required



**Tape Measure**

---



**Lump Hammer**

---



**Stainless Steel Nails**



**PPE**

---



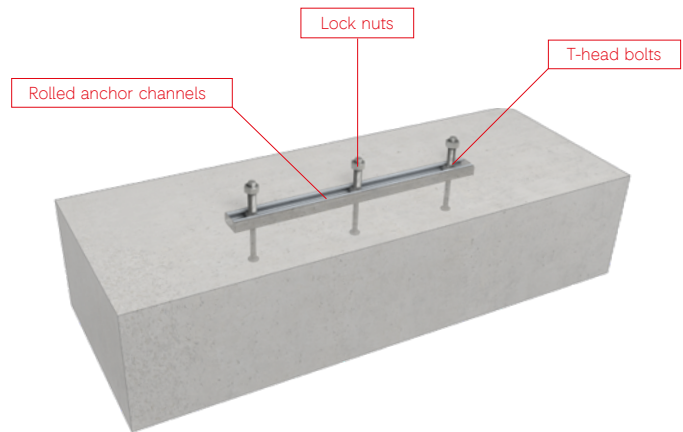
**Construction Issue Drawings**

## Introduction

Cast-in Channels (CIC) comprise of 3050mm rolled anchor channels with swaged studs, M12 T-head bolts and lock nuts. All components are manufactured from 304 Austenitic Stainless Steel (1.4301) and 316 (1.4401).

Cast-in Channels are available in a range of sizes that will support line loads up to 27kN/m (unfactored). A continuous anchor channel embedded into the concrete wall provides high adjustability and enables quick and easy installation of masonry support brackets.

Please contact our technical team for more information [support@igmss.co.uk](mailto:support@igmss.co.uk)



# Cast-in Channel

## Safety



While Cast-in Channels are easy to handle, components are produced from steel plates and may have sharp edges. Care should be taken when handling components and suitable protective equipment should be worn at all times.

## Storage

All goods received must be stored on a level area and cordoned off so that they are clearly visible. It is the manufacturer's recommendation that the goods stored onsite should be covered. The cover should only be removed prior to installation.



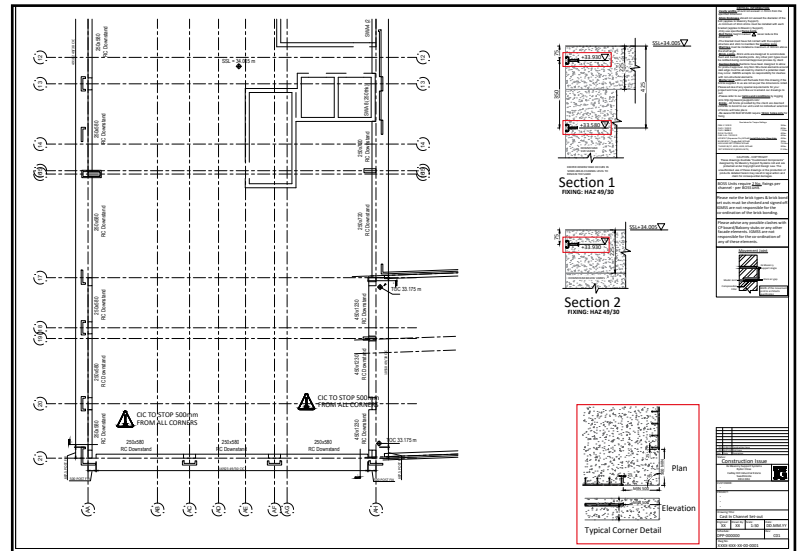
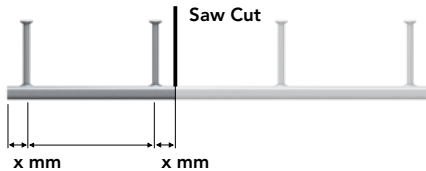
To achieve the design capacity of Cast-in Channel, each system must be installed in the correct manner.

Review Construction Issue Drawings provided by IG Masonry Support to aid the installation of Cast-in Channel. Pay attention to locations where channels stop and start (highlighted in Typical Corner Detail) and the level in which to install (highlighted in Section 1 and 2).

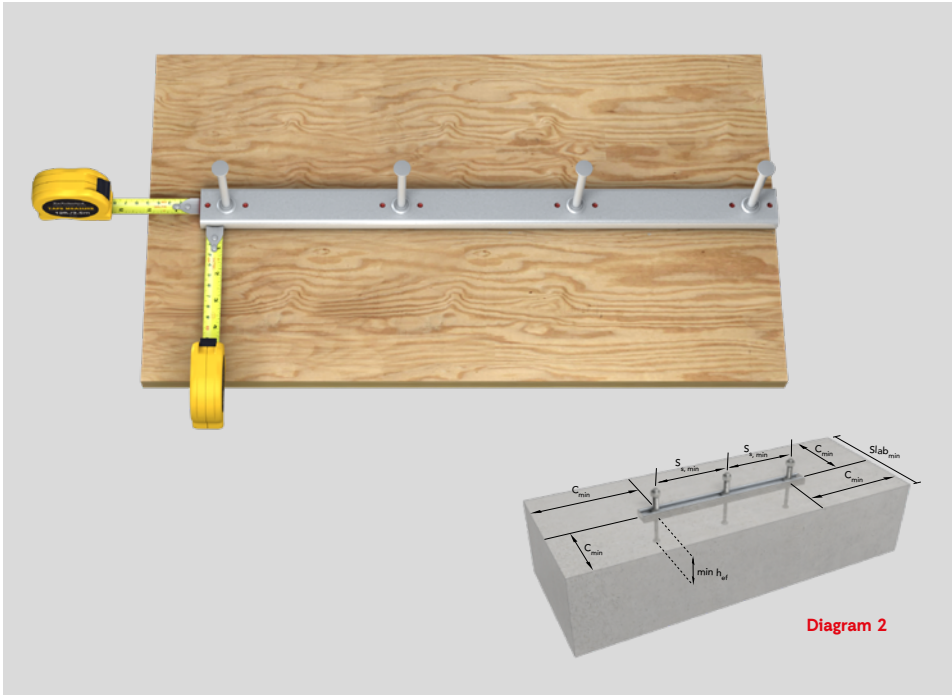
**Note:** CIC comes in 3050mm lengths and can be cut on site to meet requirements and following guidance (refer to Diagram 1):

- Ensure a minimum distance of 25mm between the studs and channel end.
- X size should be no less than 25mm and no more than 50mm.

**Diagram 1**



# 2 Position CIC on formwork



Position Cast-in Channel against formwork in desired location.

Ensure the channel has sufficient distance to the edge of concrete and is positioned at correct height within concrete (refer to Diagram 2).

**Note:** Do not remove foam filler until concrete has been poured (see step 6).

# 3

## Fix CIC to formwork



Once satisfied with positioning of Cast-in Channel, fix to formwork with stainless steel nails.

# 4

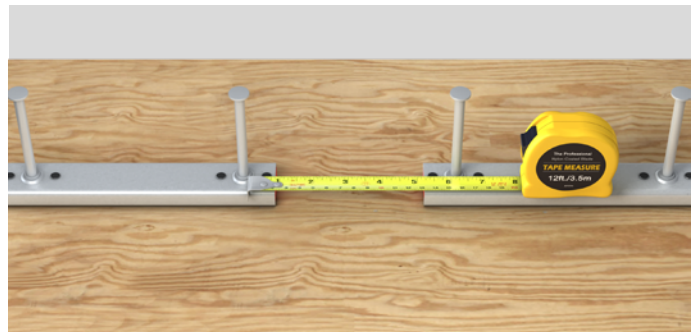
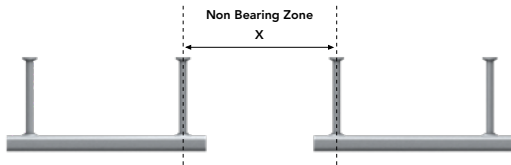
## Position remaining CIC

Repeat step 2, positioning the rest of the Cast-in Channel in the required locations, ensuring the correct edge distances and minimum spacing between channels has been allowed for (see Table 1 and Diagram 3).

Table 1

Cast-In Channel		38/17-167	40/25	49/30
Min. Stud Distance (mm)	X	167mm	250mm	250mm

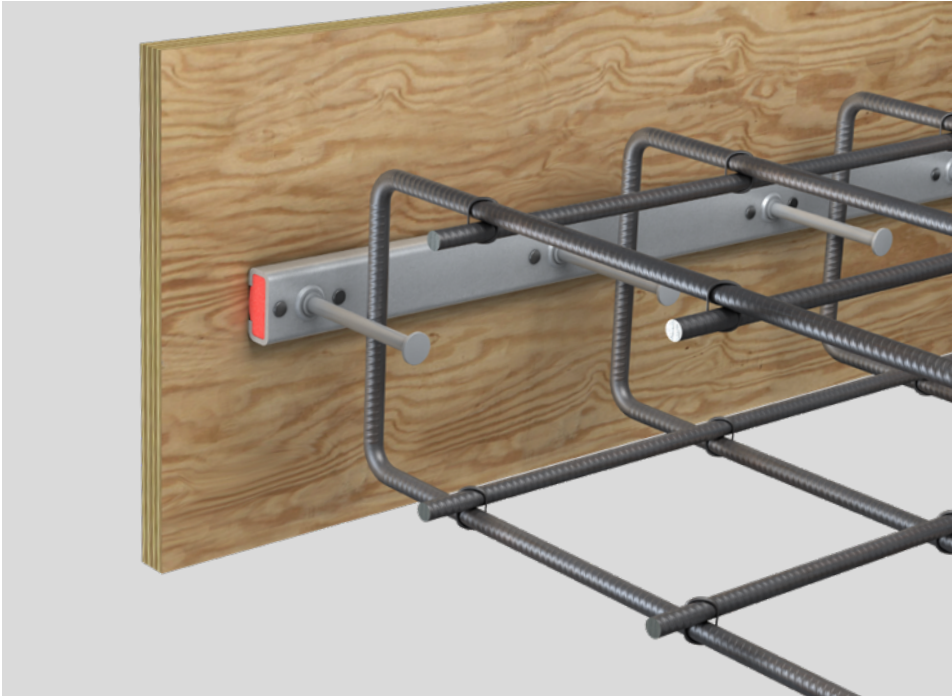
Diagram 3





# 5

## Cast concrete into formwork



Position formwork, ensuring the Cast-in Channel has been positioned at the correct level and is horizontal.

Proceed with casting concrete into the formwork.

# 6

## Remove formwork

---

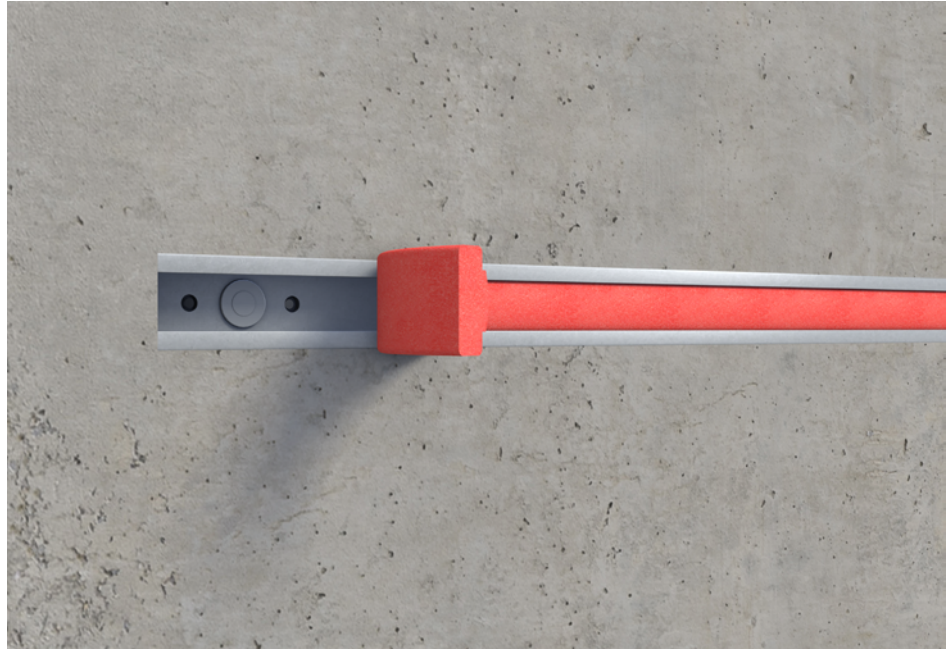


After the concrete is cured,  
remove formwork.

# 7

## Remove foam filler

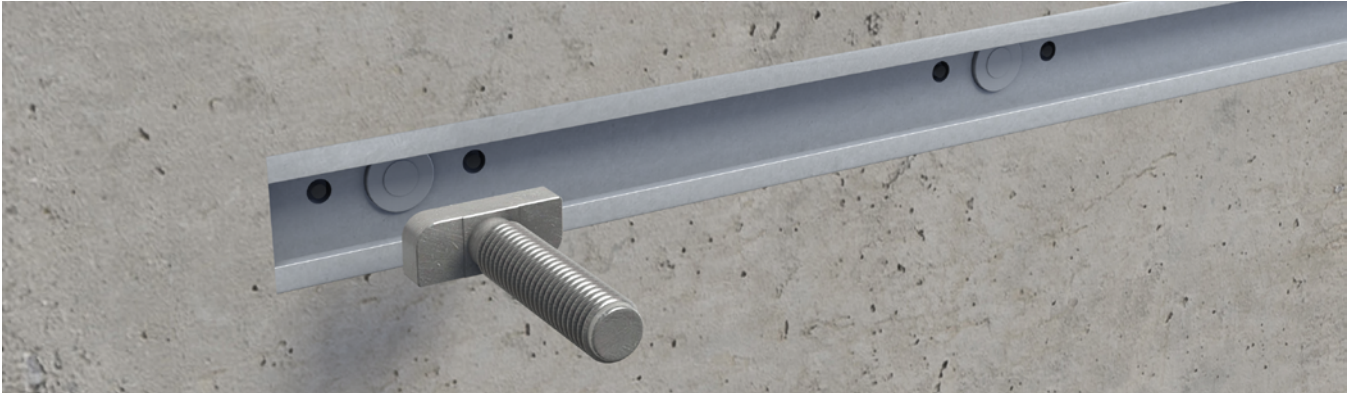
Remove protective foam filler inside the channel when ready to install masonry support.



# 8

## Insert T-head bolt

---



Install T-head bolt with head parallel to the channel.

# 9

**Rotate T-head bolt into place**

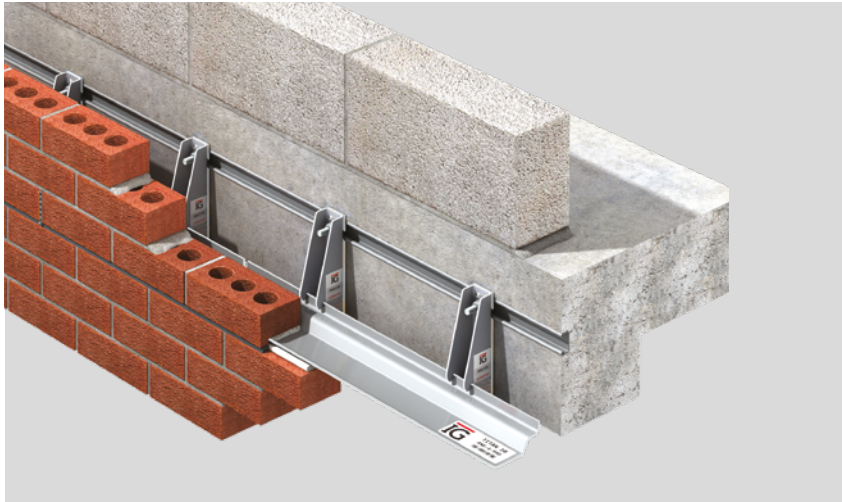
**IG** | Masonry Support



Once inserted, rotate T-head bolt 90° to keep fixing in place and align fixings to masonry support bracket centres.

# 10

## Torque fixings



Install masonry support system using appropriate installation guide and ensure you torque fixings to correct setting for fixing type (refer to Table 2 or fixings box).

**Table 2**

Cast-in Channel	T-Head Bolt Diameter (mm)	Setting Torque (Nm)
38/17-167	M12	50
40/25	M12	50
49/30*	M12	50

\*49/30 Cast-in Channel is only specified in extremely high loading situation.

The IG Masonry Support technical team are on hand to provide support when installing Cast-in Channel. To receive support, please call **+44 (0)1283 200 157** or email [support@igmss.co.uk](mailto:support@igmss.co.uk)

---

### **Additional installation materials**



For additional installation materials, please visit [igmasonrystsupport.com](http://igmasonrystsupport.com) or scan the QR code. Alternatively please refer to the supporting documentation supplied with this guide.

# **IG** | Masonry Support

## **Great Britain**

Cadley Hill Industrial Estate  
Ryder Close, Swadlincote  
South Derbyshire, DE11 9EU

—  
T +44 (0)1283 200 157  
[support@igmasonrysupport.com](mailto:support@igmasonrysupport.com)

## **Ireland**

Ballyreagh Industrial Estate  
Sandholes Road, Cookstown  
County Tyrone, BT80 9DG

—  
T +44 (0)28 8676 0334  
[info@igmasonrysupport.com](mailto:info@igmasonrysupport.com)