

IG Brick Panel System

Installation Guide



IG Brick Panel System

Installation tools and information required

Installation method and tools required may vary depending on substructure design by others. IG Masonry Support has made every effort to provide basic instructions however additional installation support is provided for each project to suit requirements.



Torque Wrench



Spanner



PPE



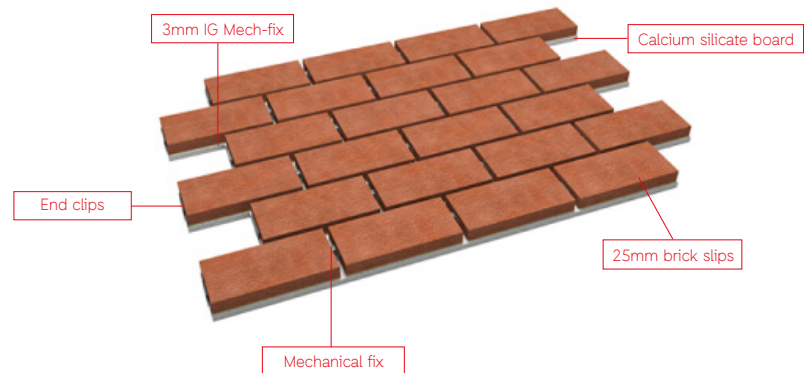
Construction Issue Drawings

Introduction

IG's Brick Panel System is a prefabricated, lightweight and A1 fire-rated brick slip soffit system. The system enables designers and specifiers to create deeper soffits and ensure compliance with Fire Safety: Approved Document B.

The Brick Panel System is manufactured from 25mm thick brick slips cut from standard brick masonry units to BS EN 771-1:2011 or BS EN 771-2:2011. The calcium silicate board is 12mm thick with 3mm thick IG Mech-fix adhesive and stainless steel mechanical fixings.

For any support required, contact our technical team support@igmss.co.uk



IG Brick Panel System

Safety



IG Brick Slip Panels are produced from sheared plates and may have sharp edges. Care must be taken when handling units and suitable workwear should be worn at all times.

When lifting or carrying a Brick Slip Arch unit, you should undertake a personal risk assessment paying attention to the size and weight of the product. To avoid lifting strains and product damage, all units must be lifted by at least two people or alternatively by mechanical means.

Do not use or install damaged Brick Slip Panel units.

Storage

Unpointed brick slips are fragile therefore units must be stored correctly in a level and cordoned-off area so that they are visible. Care must be taken when unwrapping the delivered product. All goods must be opened and inspected immediately after delivery. Any irregularities must be reported in writing, within 5 days of delivery to IG Masonry Support.

The manufacturer recommends that the goods onsite should be covered. This cover and protective wrapping should only be removed before installation.

Disposal

Please ensure that all IG packaging and waste is disposed of responsibly. Due care must be given to the environmental impact of the disposal method.



To achieve the design capacity of Brick Slip Panels, each unit must be installed in the correct manner.

Before installing Brick Slip Panels, dimensions should be checked and cross referenced with the layout drawing (provided by the designer of the substructure).

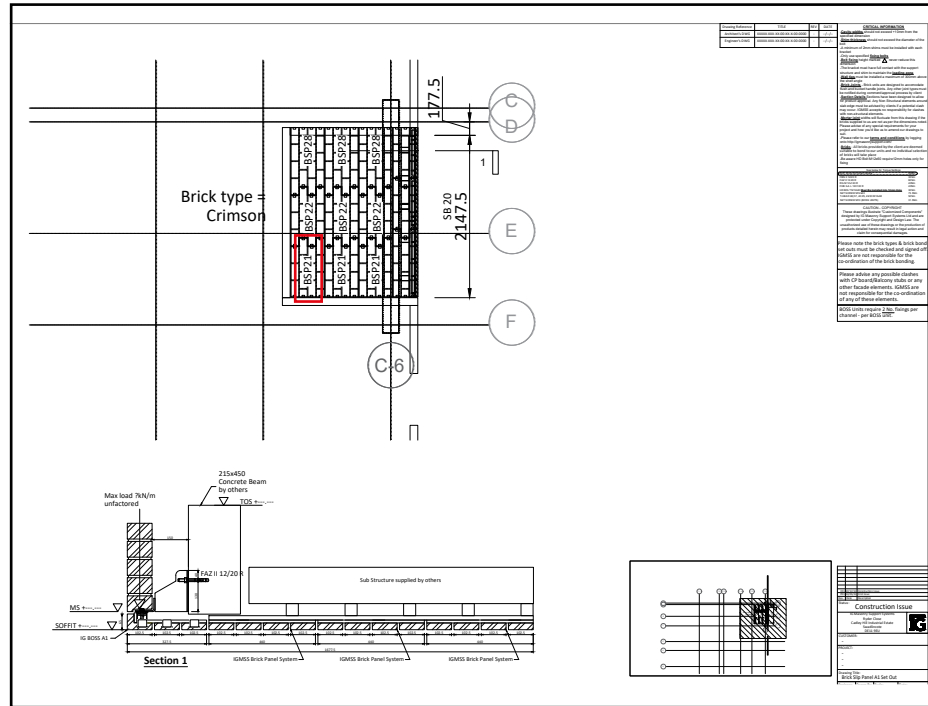
This will help ensure that the area is compatible and suitable to proceed with the installation.



2 Review Construction Issue Drawings

Use the Construction Issue Drawings provided by IG Masonry Support to install each Brick Slip Panel unit in the correct location.

Note: The reference number (example highlighted in this drawing) correlates to the same reference number shown on the printed label on each unit.



3

Offer up and fix first Brick Slip Panel unit

Offer up the first Brick Slip Panel unit at the datum point ensuring it is supported by a jig where necessary.

Utilising the fixings recommended for the weight and load on the Construction Issue Drawings, fix the panel to the substructure. When satisfied that the fixings are installed to the recommended settings, spray for confirmation.

Note: Panels may be heavy and adequate equipment should be used to lift panels into position. A supporting jig should be used to hold the panel in position and allow fixing to the substructure. The jig should only be removed when the panel is fixed in place.

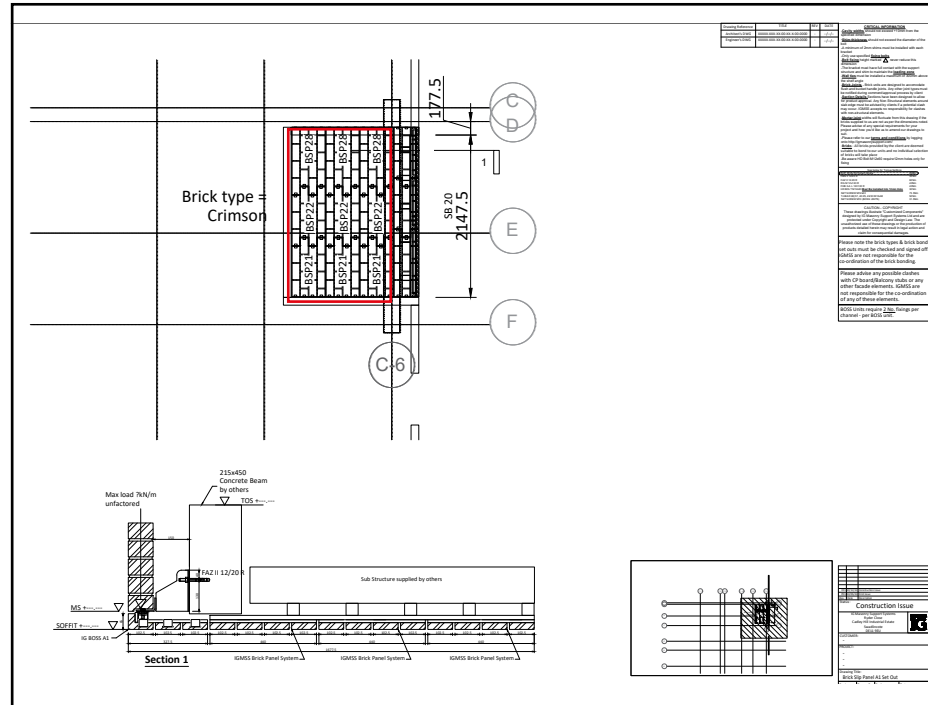


4

Locate neighbouring units

Use the Construction Issue Drawings provided by IG Masonry Support to locate the neighbouring Brick Slip Panel units.

Note: The reference number (example highlighted in this drawing) correlates to the same reference number shown on the printed label on each unit.



5

Install neighbouring units



5mm clearance gap

Install all neighbouring units following the same installation process detailed in step 3 and 4 of this guide.

Note: Each interlocking panel allows for a 5mm clearance gap around adjoining edges to connecting panels. Care must be taken to maintain this gap throughout.



6

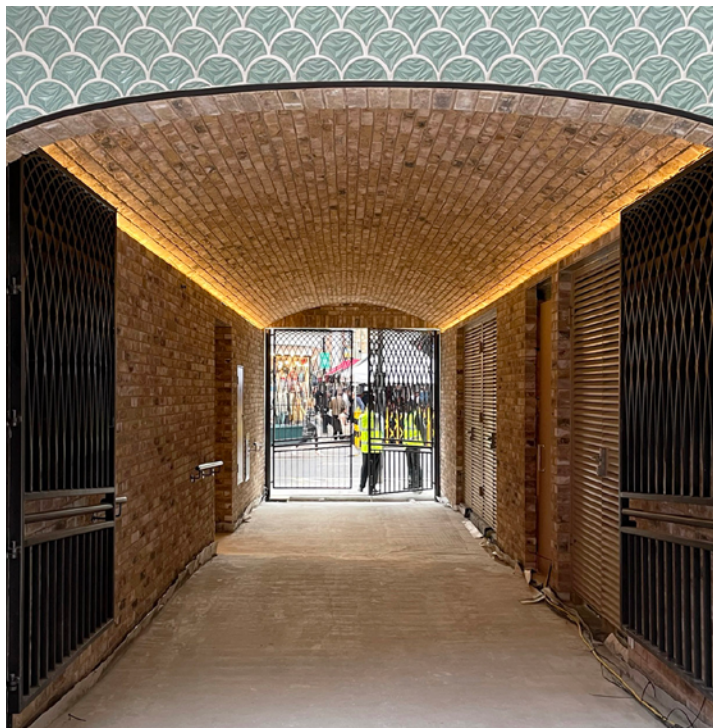
Check alignment of units and point brickwork

When the soffit area is completely covered, check the alignment of the panels by taking regular measurements from the datum point.

When satisfied with alignment, point the gaps between the Brick Slip Panels using the same mortar as the rest of the surrounding brickwork.

Note: Pointing of the soffit panels should be conducted using a pointing gun and should not take place in wet weather or in temperatures below 3°C.

This concludes the installation of IG's Brick Slip Panels.



The IG Masonry Support technical team are on hand to provide support when installing Brick Slip Panels. To receive support, please call [+44 \(0\)1283 200 157](tel:+44(0)1283200157) or email support@igmss.co.uk

Additional installation materials



For additional installation materials, please visit igmasonrystsupport.com or scan the QR code. Alternatively please refer to the supporting documentation supplied with this guide.

Great Britain

Cadley Hill Industrial Estate
Ryder Close, Swadlincote
South Derbyshire, DE11 9EU

—
T +44 (0)1283 200 157
support@igmasonrysupport.com

Ireland

Ballyreagh Industrial Estate
Sandholes Road, Cookstown
County Tyrone, BT80 9DG

—
T +44 (0)28 8676 0334
info@igmasonrysupport.com