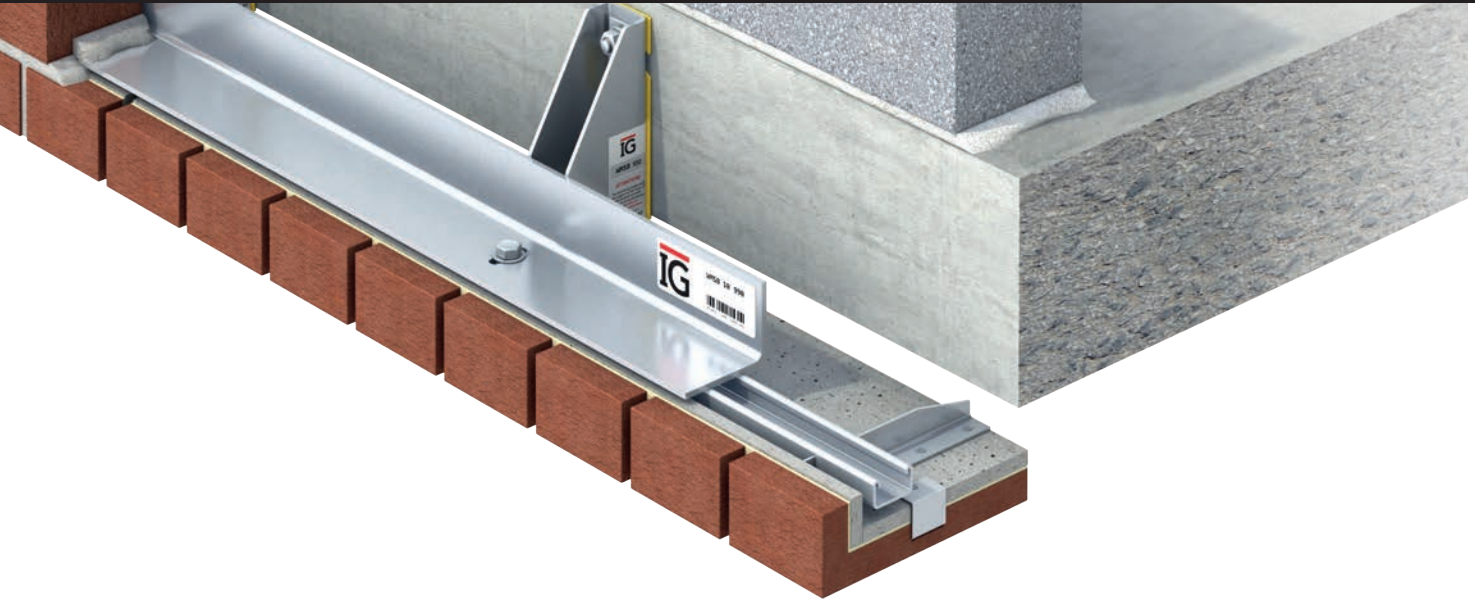
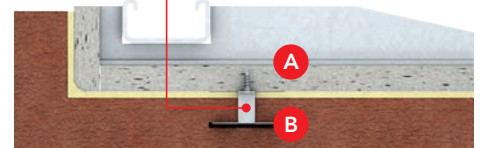
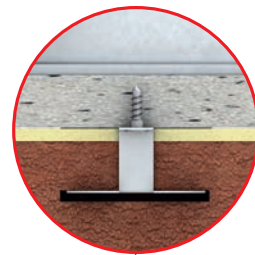


Technical Data Sheet



Product Overview

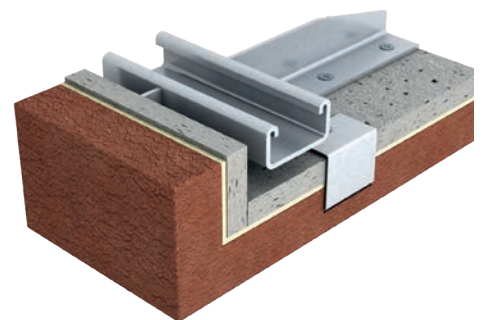
B.O.S.S. A1 is a lightweight, carbon neutral, prefabricated brick slip soffit system designed to be quickly and easily bolted to IG's Welded Masonry Support (WMS) to create deep reveals, soffits and flying beams on masonry facades. Manufactured offsite, the prefabricated components are delivered to site complete with brick slips adhesively bonded and mechanically secured to the brick carrier unit. The lightweight components facilitate fast and efficient installation and integrate seamlessly with brickwork constructed onsite. This BBA certified unit is manufactured completely from A1 Fire rated materials and is Document B:Fire Safety compliant.



- A A1 fire rated cement board
- B Patented mechanical fix

Enhanced Features

- A1 fire rated
- Hygrothermally tested
- Carbon neutral product
- Mechanically fixed brick slips
- Suitable for all heights and types of buildings



Product Design and Testing

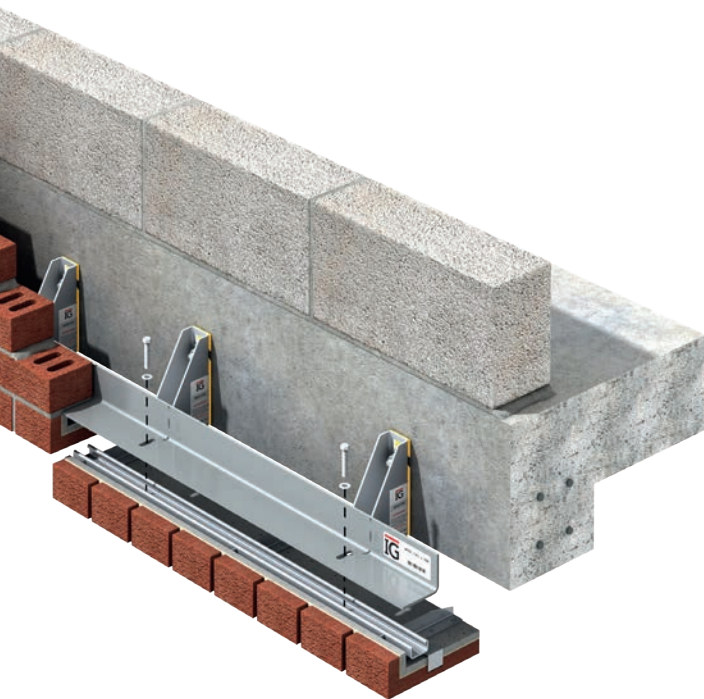
The brick slip soffit system has been independently tested by Third Party Organisations and Technical Approval Bodies to evaluate and validate the physical performance and long term durability of all components as well as ensure the products are fit for purpose and conform to regulations.

Hygrothermal Testing

The B.O.S.S. A1 units were tested to demonstrate structural performance, following a period of accelerated weathering. The bond strength of the system was evaluated after being subjected to hygrothermal conditioning in accordance with EAD090062-00-0404. The testing involved subjecting the B.O.S.S. A1 units to repeated heat /rain cycles, followed by repeated freeze/thaw cycles at a controlled temperature and humidity, all designed to simulate naturally occurring conditions. Following the weathering, pull-off tests were performed on the B.O.S.S. units.

The Testing Involved

- Cyclic heat/rain weathering to ETAG 034 conditions
- Freeze/thaw cycling to TS EN 772-22 conditions
- Tensile testing to BS EN 1015-12



Key Factors Assessed by the BBA

A1 Fire Rated

All components of the system are classified as A1 in accordance with BS EN 13501-1 : 2018 and its use is unrestricted in terms of building height and distance to the boundary by the National Building Regulations.

Thermal Performance

Where the system is used around opening head junctions it can adequately limit heat loss, as assessed by the BBA.

Condensation Risk

Where the system is used around opening heads, the risk of interstitial condensation will be minimal, as assessed by the BBA.

Durability

Provided that the system is designed, installed and used in accordance with its BBA Certificate, it will have a service life of at least 60 years.

IG Masonry Support has committed to ongoing internal testing and regular surveillance of production in order to assess

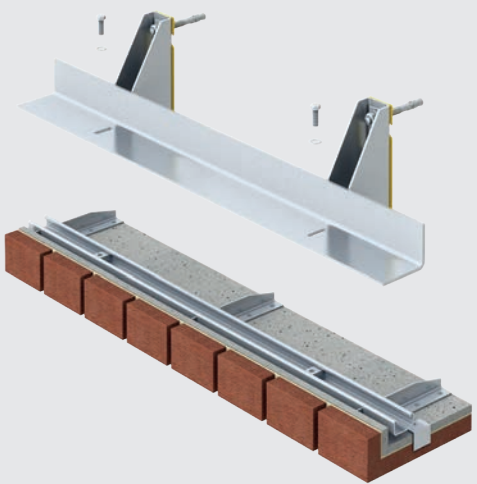
- Brick quality
- Bond strength

The BBA will carry out regular six monthly assessments to verify this testing and surveillance.

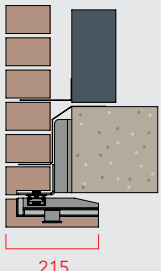
B.O.S.S. A1 – Typical Solutions

B.O.S.S. A1 is available in many profiles, four of which are shown below. Bespoke solutions including other brick arrangements can be designed to suit specific project requirements.

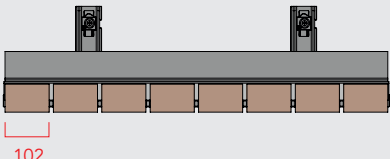
1 Header Bond 65 x 215mm



This solution is used to create header details at openings and reveals. The header bond detail on the B.O.S.S. A1 unit differentiates the soffit from the brickwork on the main facade.

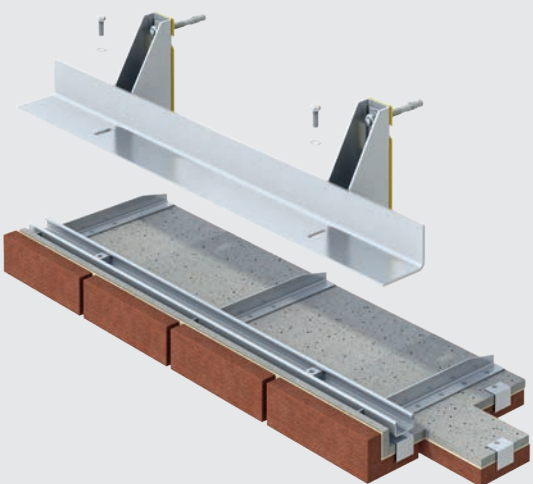


End view

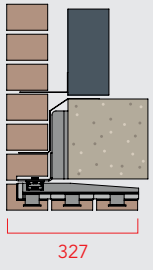


Front elevation

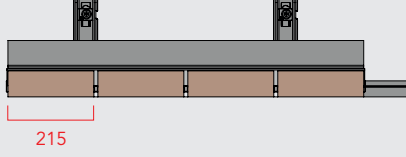
2 Stretcher Bond 65 x 327mm



Used to create deep soffits providing continuity with the brickwork on the main façade. Adjacent soffit units are designed to interlock, blending seamlessly together once the brickwork is pointed.

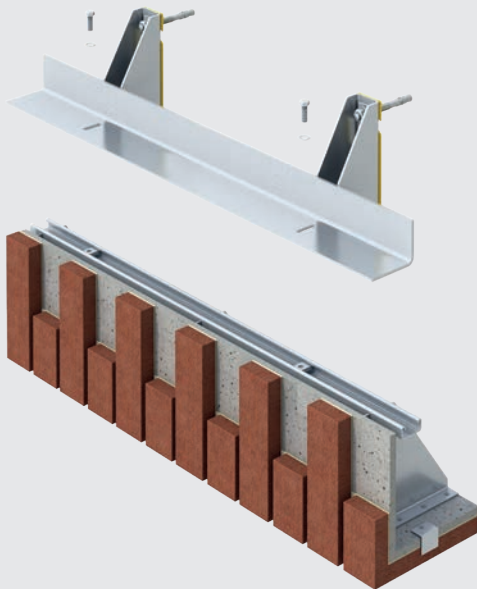


End view

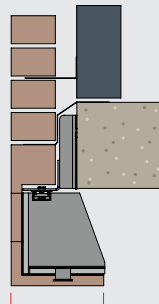


Front elevation

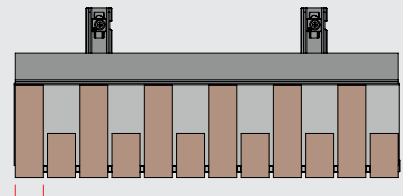
3 Half Lap Bond 215 x 215mm



This solution is used to create half lap bond details at openings and reveals. The half lap bond detail on the B.O.S.S. A1 unit differentiates the soffit from the brickwork on the main facade.

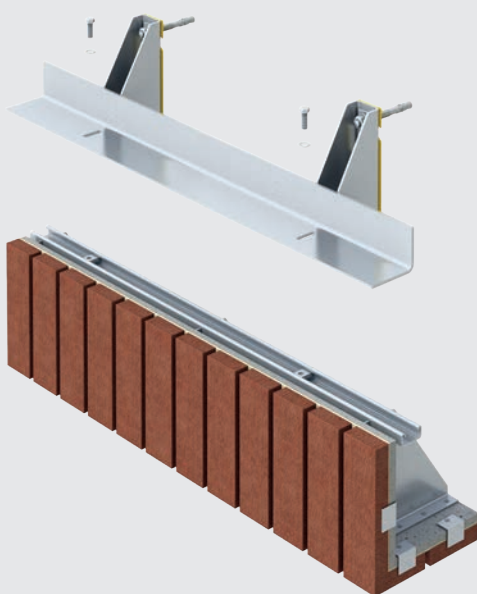


End view

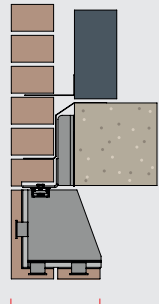


Front elevation

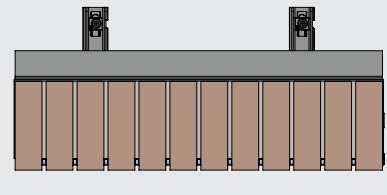
4 Soldier Bond 215 x 215mm



This solution is used to create soldier bond details at openings and reveals. The soldier bond detail on the B.O.S.S. A1 unit differentiates the soffit from the brickwork on the main facade.



End view



Front elevation

Installation



1

Insert stainless steel spring nuts into channel in B.O.S.S. A1 unit. Offer B.O.S.S. A1 unit up to underside of pre-installed IG Welded Masonry Support (WMS), aligning spring nuts with slotted hole in angle.

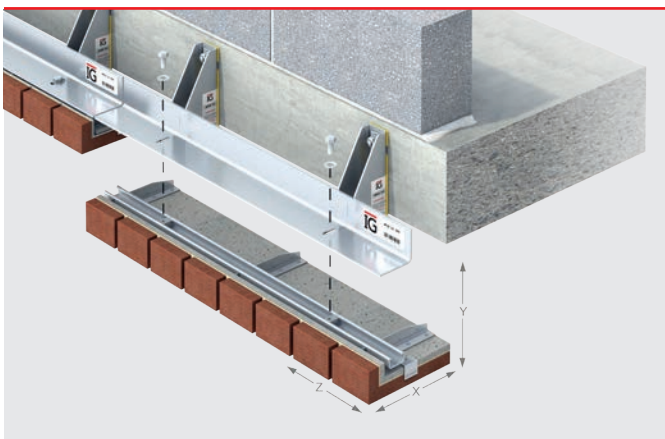
2

Fix B.O.S.S. A1 unit to pre-installed masonry support by inserting bolts through slotted holes in the angle picking up prepositioned spring nuts in B.O.S.S. A1 channel, finger-tighten bolts.



3

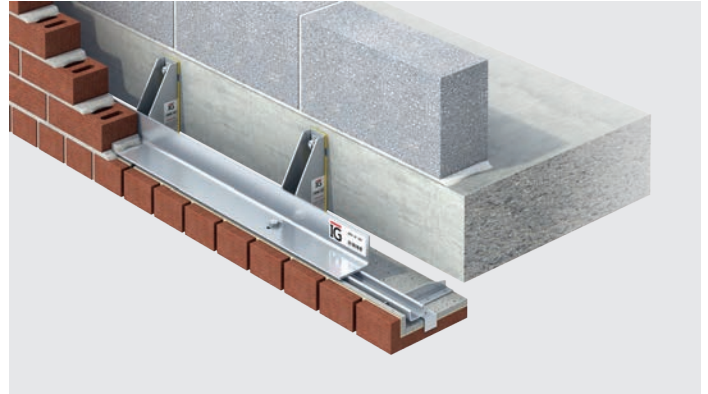
Adjust lateral (Z), vertical (Y) and horizontal (X) alignment*. Once alignment and levels are correct, bolts are torqued to 20 N·m



* Lateral adjustment (Z) is achieved by utilizing the channel in the IG Brick On Soffit System (B.O.S.S. A1) unit. The unit can be moved +/-25mm left or right on the pre-installed IG WMS. Vertical adjustment (Y) is achieved by shimming between the unit and the underside of IG WMS. Maximum shimming in this location is 6 mm. Horizontal adjustment (X) is achieved by the utilizing slotted hole in the angle. Adjustment provided is +/-15mm.

Installation Training

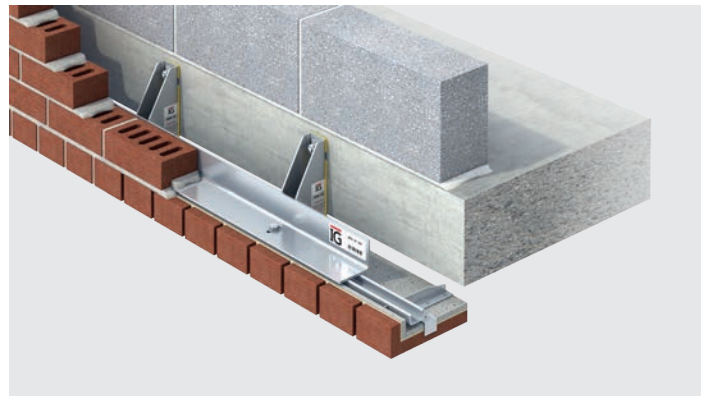
IG Masonry Support provides onsite installation training and offers onsite support from its experienced team of structural and civil engineers.



Specifying & Ordering

Design Service & Support

IG Masonry Support's designers and engineers provide a complete 3D CAD design and structural engineering service and will develop your concept into quality, cost effective prefabricated brick slip soffit solutions.



For B.O.S.S. A1 Design and Sales Enquiries Contact

For more information
please contact our Technical Team

01283 200 157

IG Swadlincote

Ryder Close
Cadley Hill Industrial Estate
Swadlincote
South Derbyshire
DE11 9EU

T 01283 200 157
E support@igmss.co.uk

IG Ireland

KG2
Ballyreagh Industrial Estate
Cookstown
Northern Ireland
BT80 9DG

T 028 8676 0334
E info@igmss.co.uk