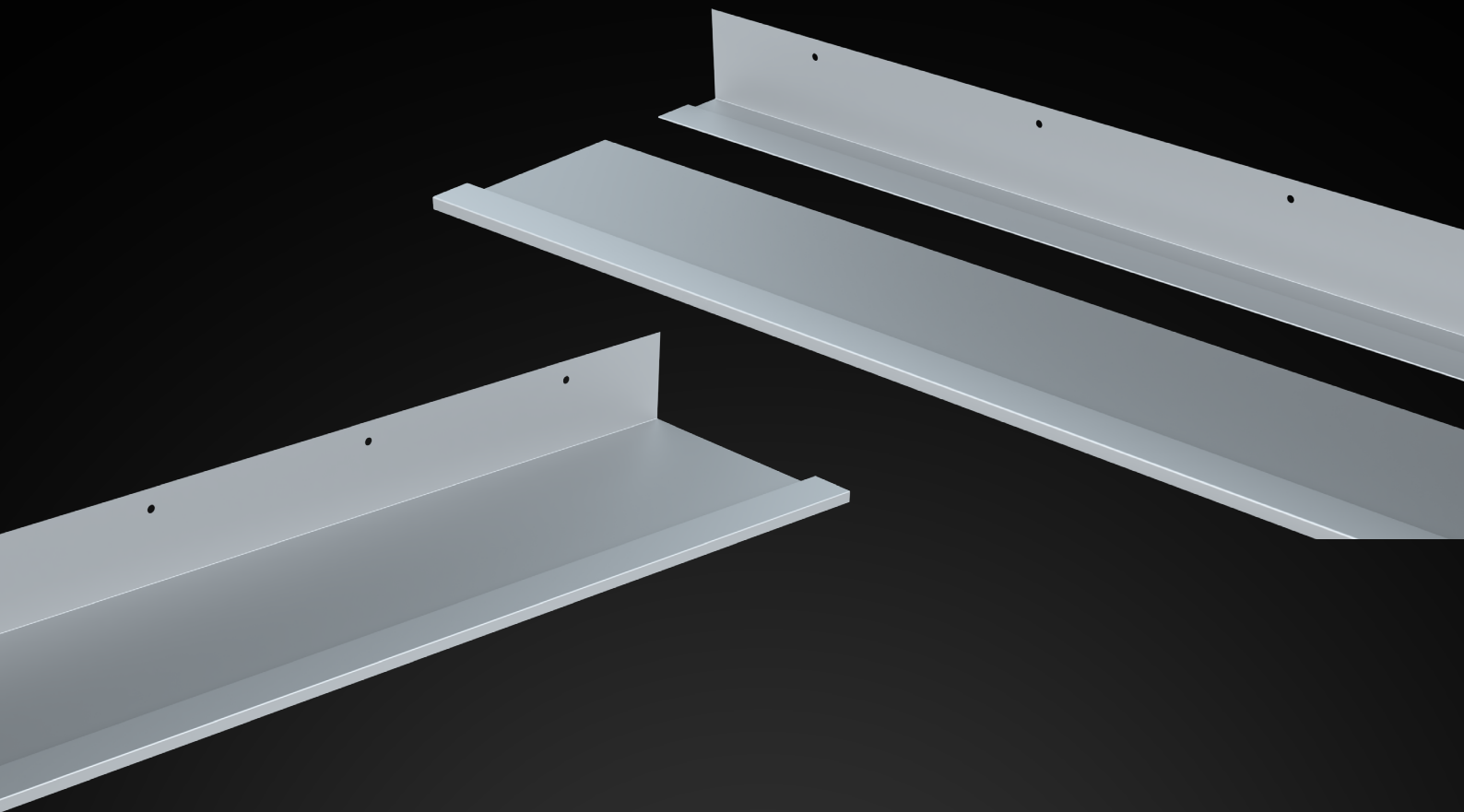


IG Soffit Concealer

Product Guide



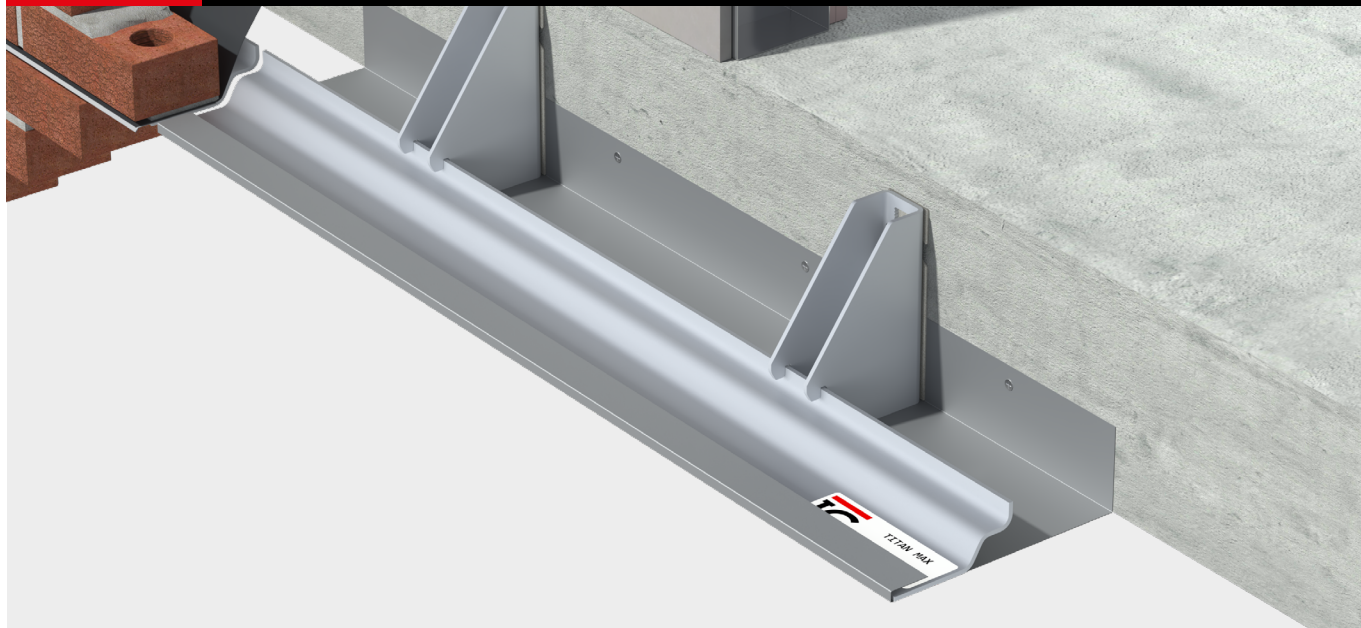
Introduction

IG Soffit Concealers are prefabricated cover systems designed to provide a uniform and durable finish around masonry window and door openings. They conceal the exposed soffits of shelf angles and cavity interfaces, ensuring a consistent detail across the façade.

IG Masonry Support offers two types of Soffit Concealers:

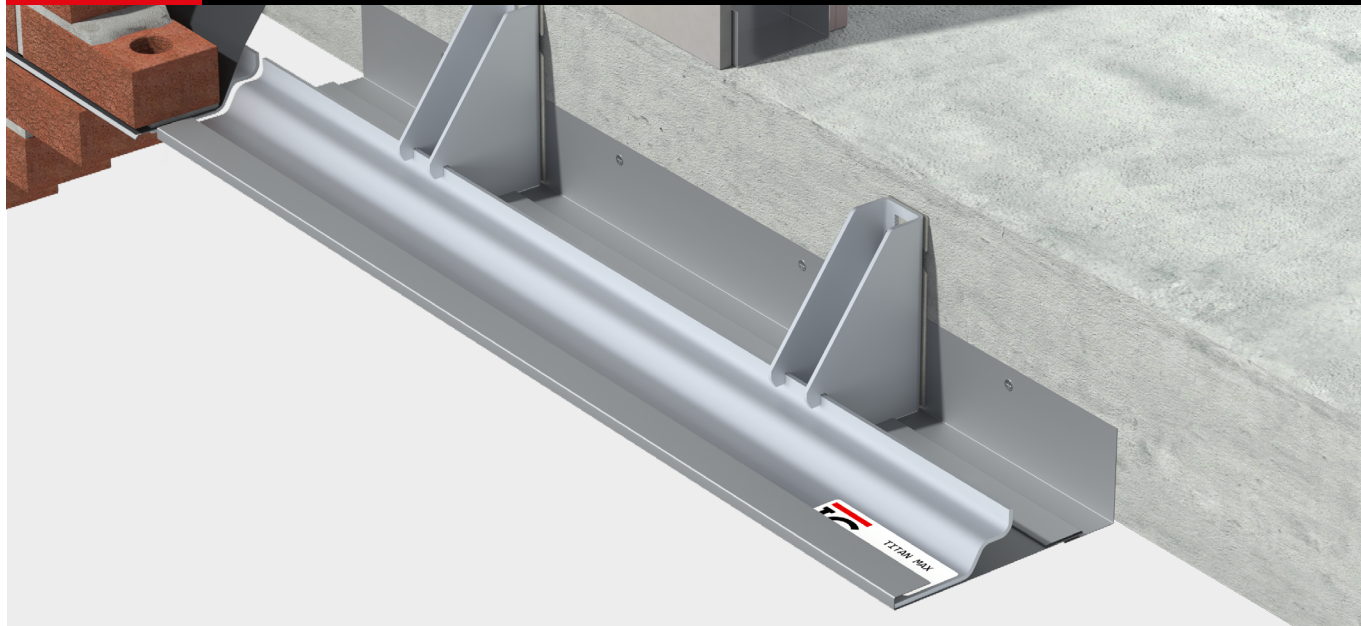
One-piece

Providing a snug fit around the horizontal shelf angle (recommended solution)



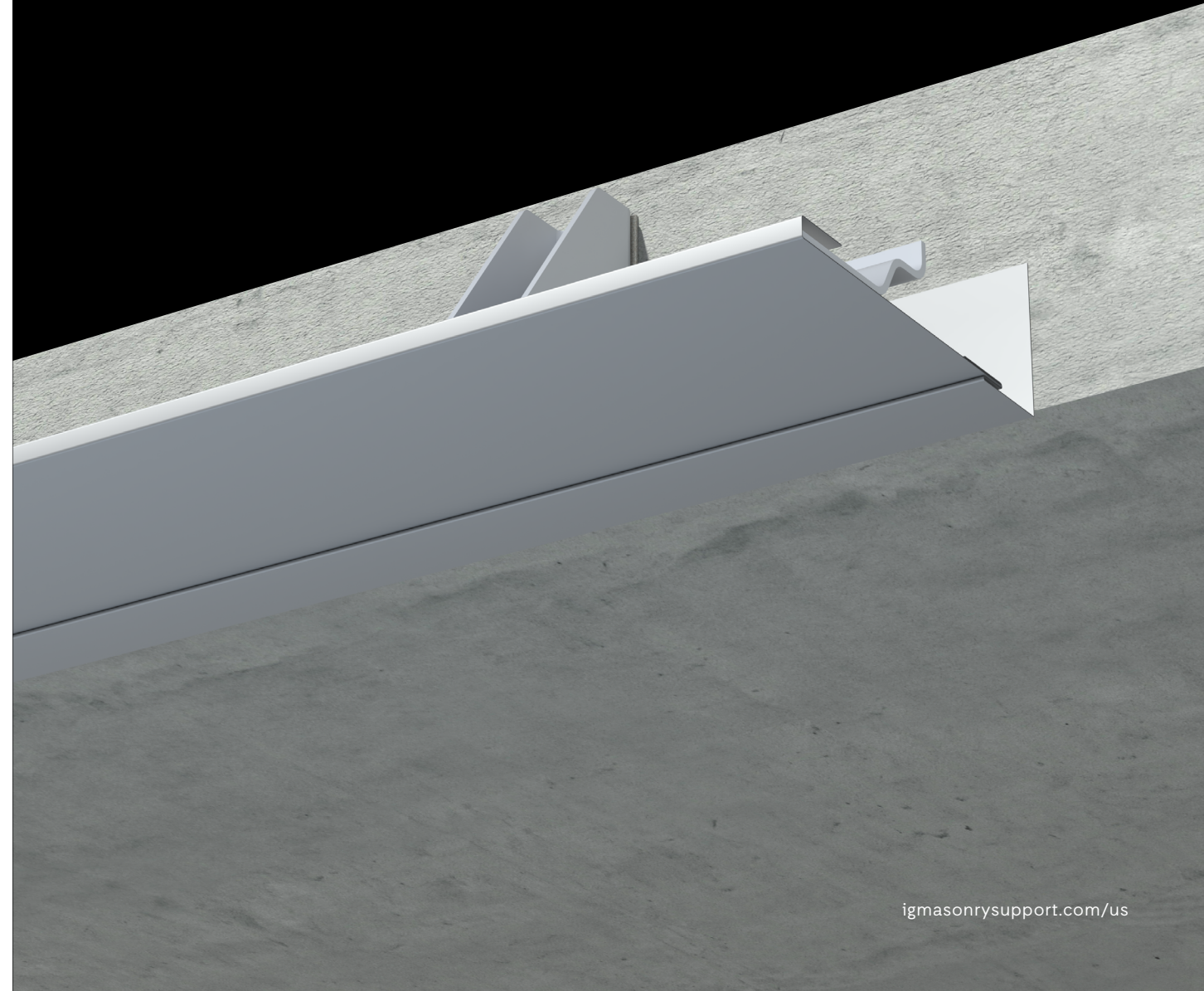
Two-piece

Featuring a deeper front face finish and offering slight adjustability



Benefits of IG Soffit Concealers

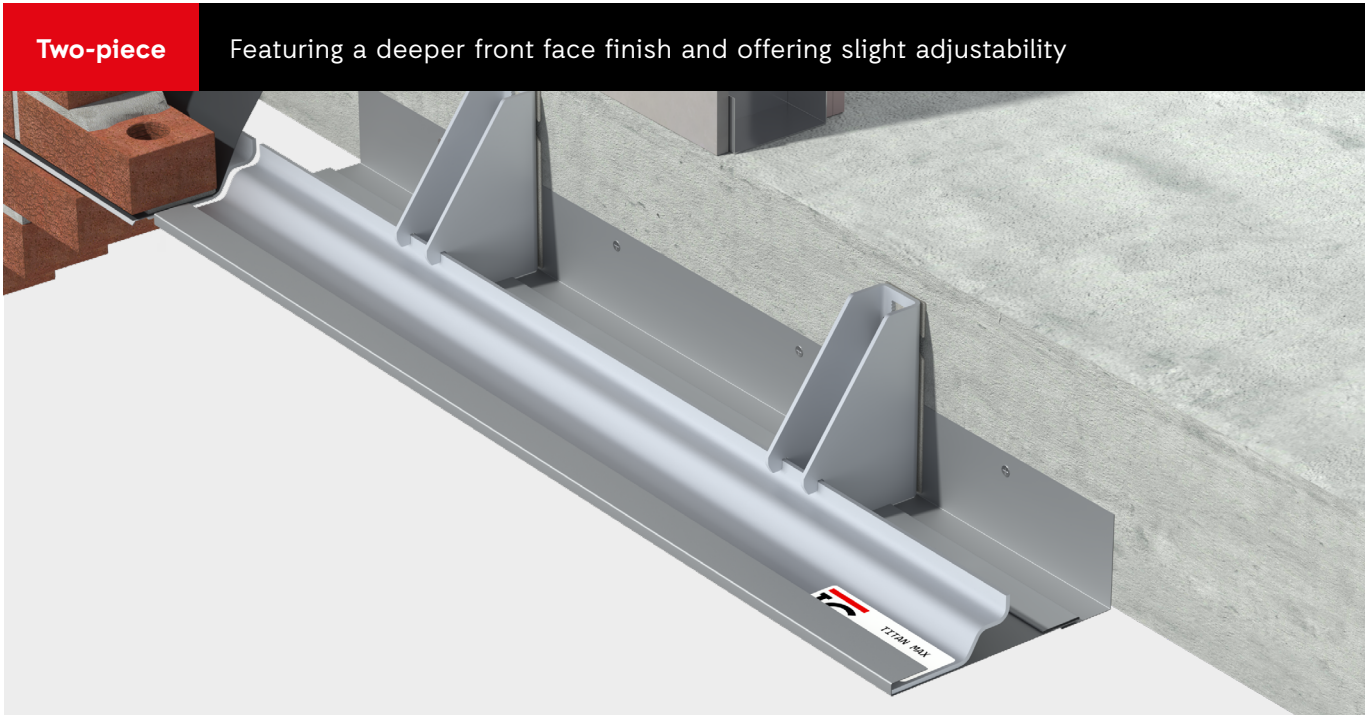
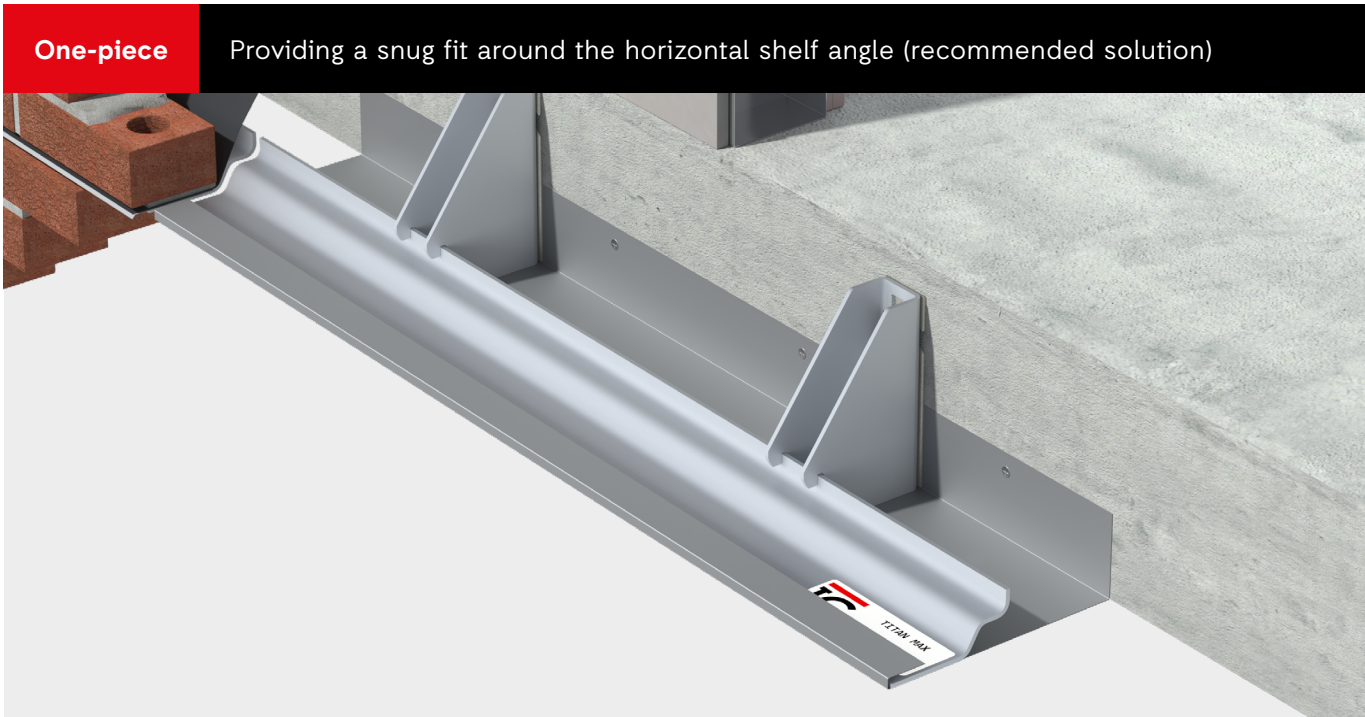
- Lightweight and simple to handle onsite
- Easy installation
- Available to suit customized lengths and cavity widths
- Available in various standard and premium colors
- Provides a consistent aesthetic across façade openings
- Assists in closing the cavity at soffit level
- Resistant to corrosion when finished appropriately



Introduction

IG Soffit Concealers are prefabricated cover systems designed to provide a uniform and durable finish around masonry window and door openings. They conceal the exposed soffits of shelf angles and cavity interfaces, ensuring a consistent detail across the façade.

IG Masonry Support offers two types of Soffit Concealers:



Product Specification

Material

IG Soffit Concealers are available in .032” and .040” aluminum, as well as 304 Austenitic Stainless Steel (ASTM 304 / EN 1.4301), with options for powder-coated or non-powder-coated finishes, in accordance with project specifications.

Material type and finish requirements must be clearly specified at the time of order, together with all color requirements.

Sizing

IG aluminum Soffit Concealers come as standard in a maximum of 10ft lengths. Stainless steel Soffit Concealers come in a maximum length of 7'-11". Custom sizes are available on request.

The product can accommodate any size of cavity.

Color Guide

Scan the QR code to explore the standard and premium colors available in 032 and 040 aluminum. Please note that the colors shown are only representative, as printing conditions may affect accuracy. Actual samples can be requested directly from the supplier.



PAC-CLAD Petersen
Color Guide



Bespoke RAL
Color Chart

If your project requires a color not listed or stainless steel material, a RAL code can be provided to manufacture an IG Soffit Concealer that matches your exact requirements.

Specifying and Ordering

IG Soffit Concealers can be ordered by completing an order form and submitting via email to inquiries@igmasonrysupport.com



To download the forms, scan the QR code or visit igmasonrysupport.com/us/soffit-concealer

Installation

Safety



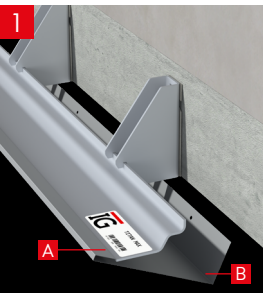
While IG Soffit Concealers are easy to handle, components are produced from steel plates and may have sharp edges. Care should be taken when handling components and suitable protective equipment should be worn at all times.

Storage

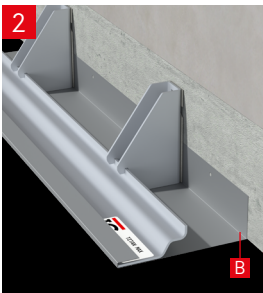
All goods received must be stored and clearly cordoned off for visibility. The manufacturer recommends that all goods stored onsite be covered, with the cover removed only immediately prior to installation.

One-piece Soffit Concealer

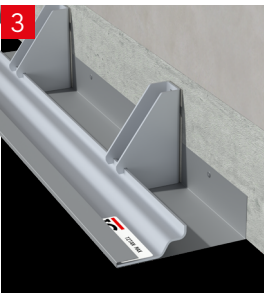
The following guidance should be followed to successfully install IG’s One-piece Soffit Concealer.



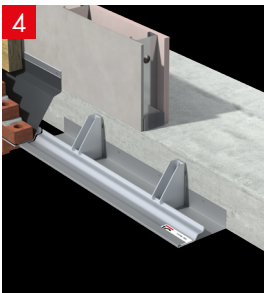
Offer up point A of the prefabricated component to the pre-installed masonry support system, keeping point B in a downward position.



Rotate the component until point B comes in contact with the bottom heel of the bracket and the component is horizontal in profile.



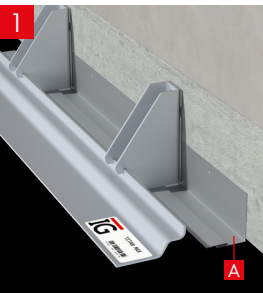
Align and level the back of the component before fixing to the substructure, utilizing the pre-drilled holes.



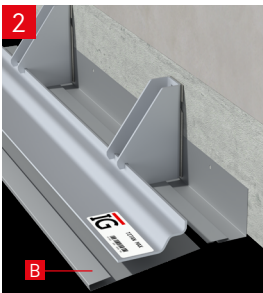
Commence with torquing the masonry support system.

Two-piece Soffit Concealer

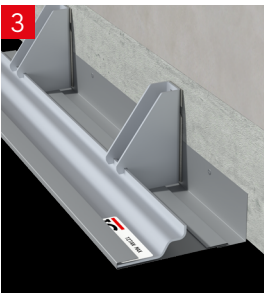
The following guidance should be followed to successfully install IG’s Two-piece Soffit Concealer.



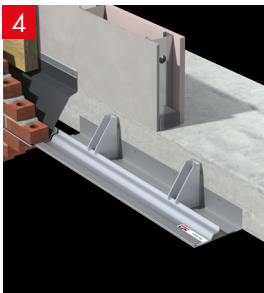
Position part A behind the pre-installed masonry support system and loosely secure its vertical upstand to the backing structure, keeping it adjustable until part B is installed for fine adjustments.



Offer up part B to the pre-installed masonry support system until it interlocks with part A.



Align and level before fixing back to the substructure, utilizing the pre-drilled holes.



Commence with torquing the masonry support system.

The IG Masonry Support
Technical Team is on hand
to provide support when installing
IG Soffit Concealers. Please call
T +1 302 303 5410 or email
inquiries@igmasonrysupport.com

IG Masonry Support Systems Inc.

108 Lakeland Avenue
Dover, Delaware
United States
DE 19901

—
T +1 302 303 5410
inquiries@igmasonrysupport.com

igmasonrysupport.com/us