

TITAN **MAX**

Installation Guide (Post-Fixed)

Tools required



Pocket Level



Chalk line / Laser



Tape Measure



Hammer Drill
with Masonry Drill Bit



Lump Hammer



Torque Wrench



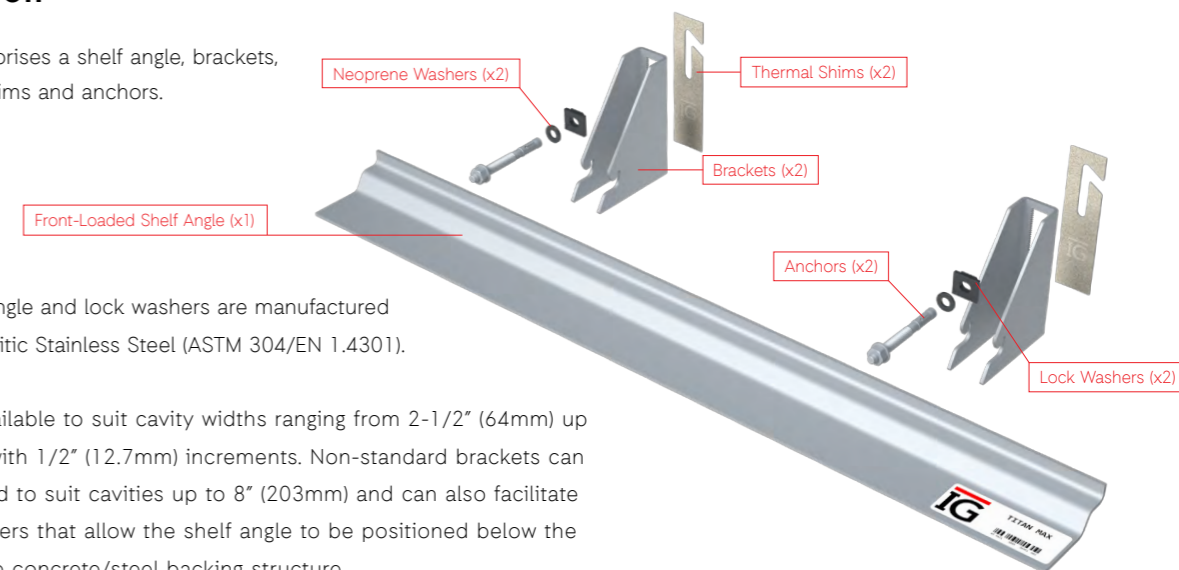
Spanner



Pencil

Introduction

TITAN MAX comprises a shelf angle, brackets, lock washers, shims and anchors.



Brackets, shelf angle and lock washers are manufactured from 304 Austenitic Stainless Steel (ASTM 304/EN 1.4301).

Brackets are available to suit cavity widths ranging from 2-1/2" (64mm) up to 8" (203mm) with 1/2" (12.7mm) increments. Non-standard brackets can be manufactured to suit cavities up to 8" (203mm) and can also facilitate extended droppers that allow the shelf angle to be positioned below the underside of the concrete/steel backing structure.

Please contact our technical team for more information

inquiries@igmasonrysupport.com

Safety



While TITAN MAX units are easy to handle, components are produced from steel plates and may have sharp edges. Care should be taken when handling components and suitable protective equipment should be worn at all times.

Do not install damaged TITAN MAX units.

Storage

All factory-wrapped goods received must be stored on a level and cordoned off area so they are clearly visible. Care must be taken when opening the wrapping on the delivered product. All goods must be opened and inspected immediately after delivery. Any irregularities must be reported in writing to IG Masonry Support within 5 days of delivery.

Disposal

The TITAN MAX system's stainless steel components are fully recyclable, minimizing waste and reducing its carbon footprint at the end of its service life. Thermal Shims should be safely disposed of in landfill.



To achieve the design capacity of TITAN MAX, the system must be installed in the correct manner.

1 Pre-installation check

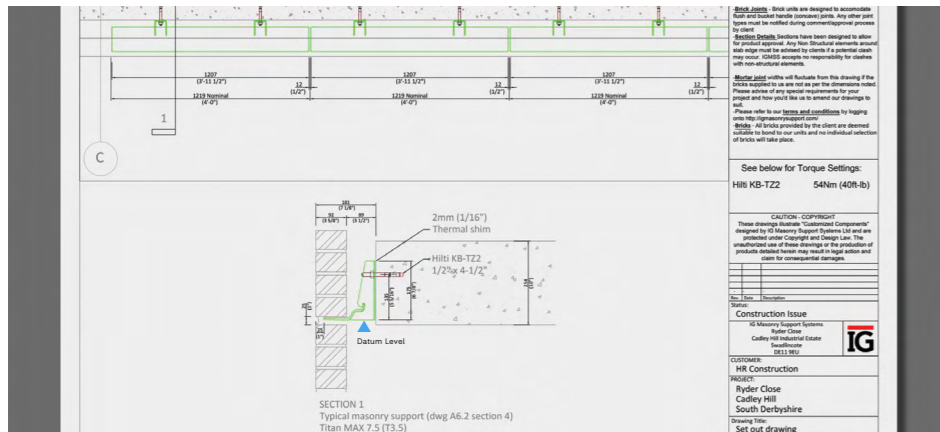


Before TITAN MAX is installed, the support structure must be checked for alignment and level.

If the support structure is outside the adjustment range detailed in our Product Guide, please consult with our technical team for advice.

2

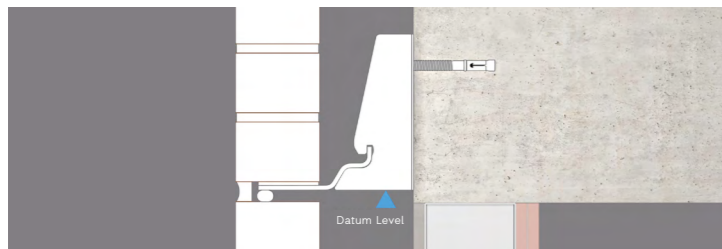
Determine Datum Level



Review Set Out Drawings provided and refer to Section Details to aid the installation of TITAN MAX.

The Datum Level (underside of the bracket) should be determined by reviewing the brickwork constructed onsite and transferring the coursing level onto the slab edge.

Levels of the shelf may differ if you are using a lipped brick.



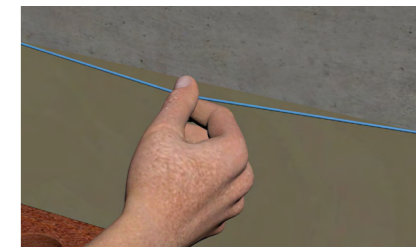
3

Transfer to slab edge



Transfer the Datum Level to the slab edge and mark with a pencil.

Pull a chalk line through or use a laser level.



4

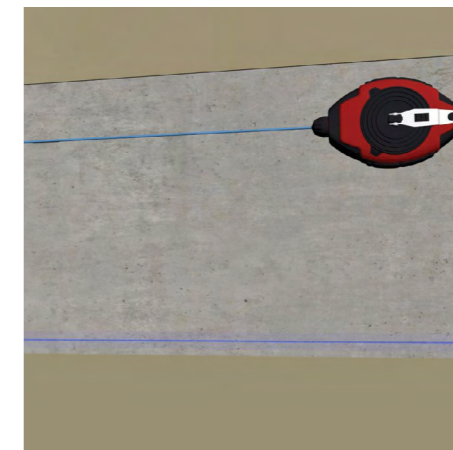
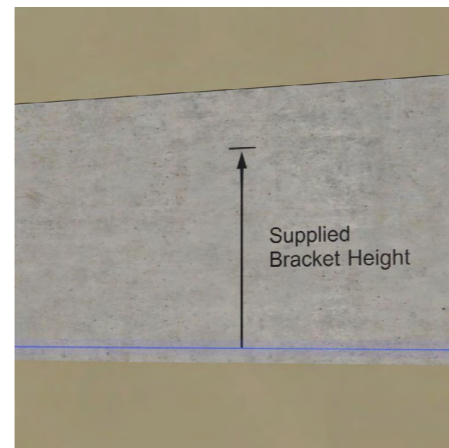
Measure bracket height



Confirm that the measurement of the supplied bracket matches the height in Set Out Drawings.

5

Mark bracket height

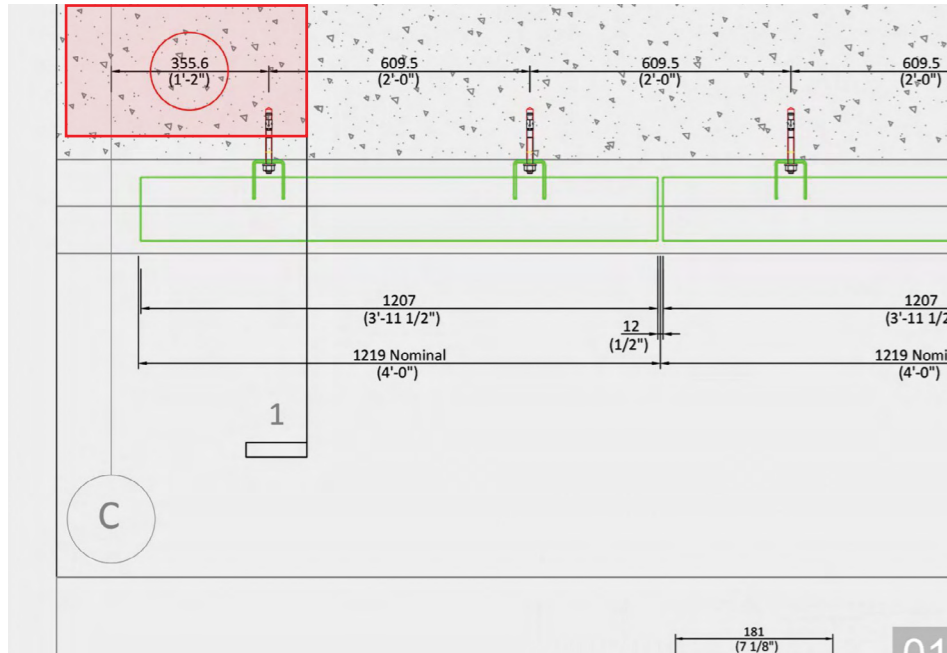


Measure up from the Datum Level and mark bracket height with a pencil on the slab face.

Pull chalk line through at this level or laser level.

6

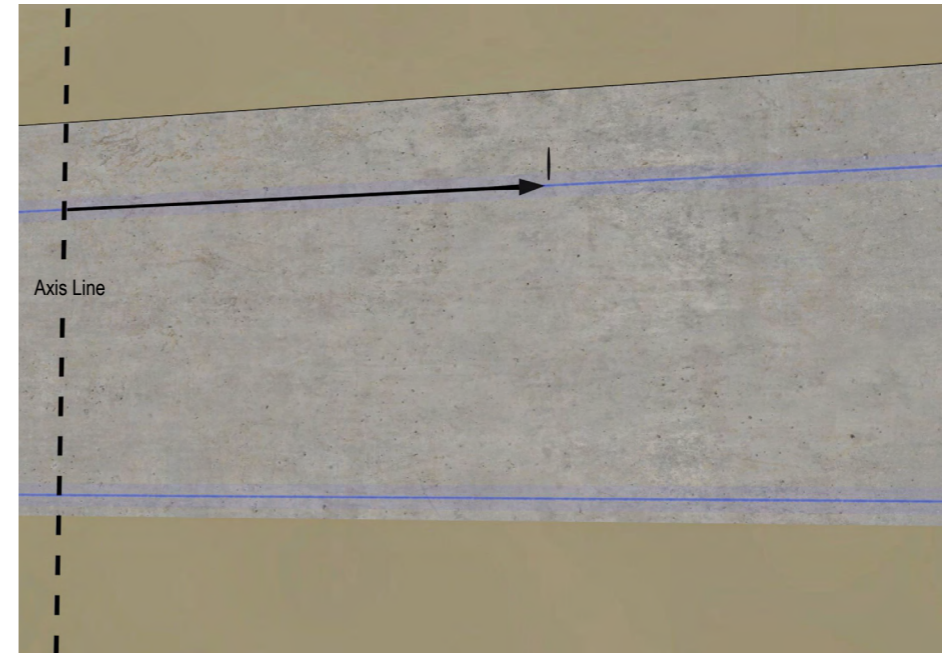
Determine first bracket position



Review Set Out Drawings to determine position of the first bracket, normally dimensioned off an axis line or a slab edge corner.

7

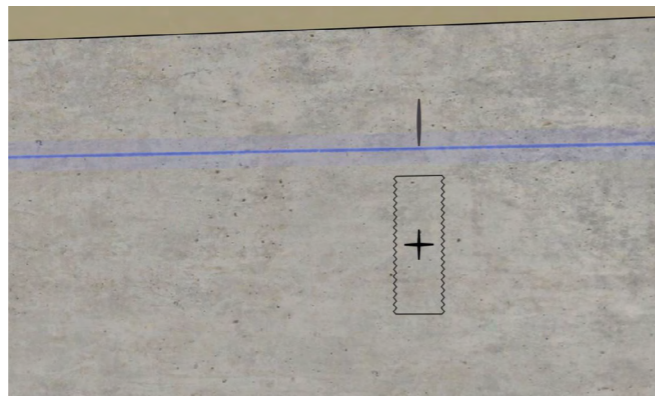
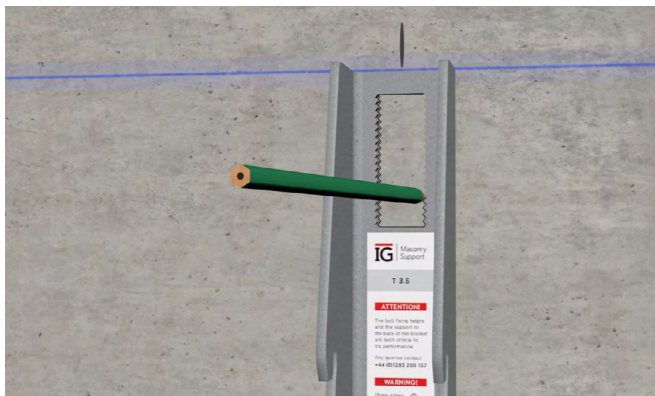
Mark bracket centres



Using this dimension, put a small vertical pencil mark on the top chalk line and transfer the remaining bracket centres all onto the slab edge (referenced on Set Out Drawings).

8

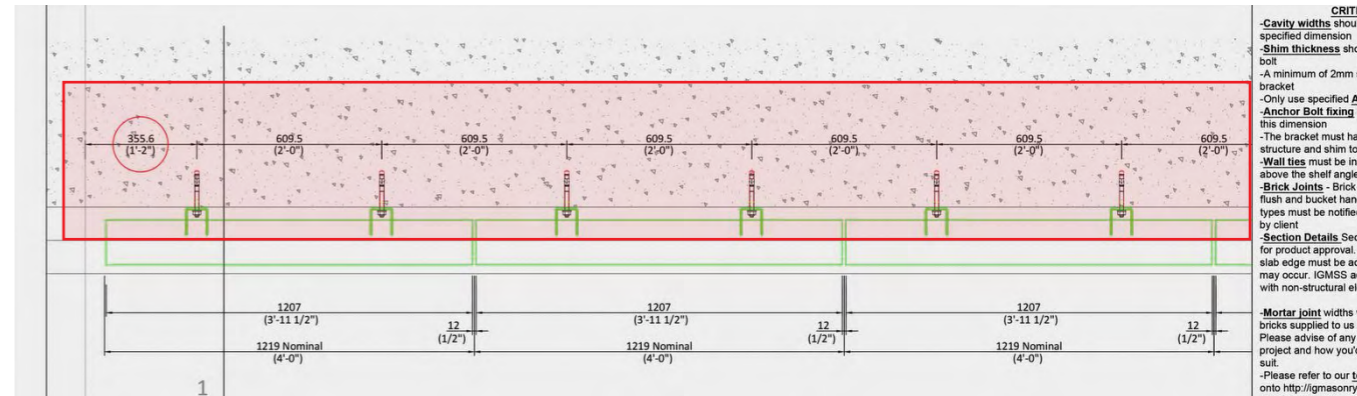
Trace serrated section and mark centre



Using one of the brackets supplied, position it level with the top chalk line. Centred on the pencil mark, trace the internal serrated section of the bracket and mark centre with a crosshair.

9

Mark remaining bracket centres

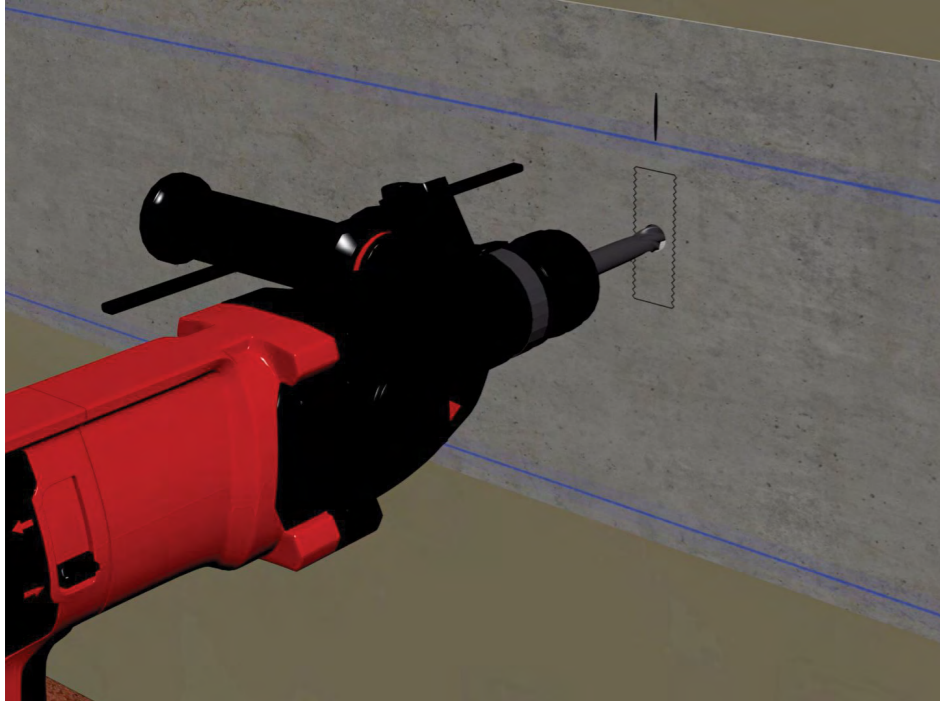


Review Set Out Drawings for guidance on marking the remaining bracket centres onto the slab edge.

Check technical specification on anchor box and/or Set out Drawings for embedment and drill depth of the anchor and set hammer drill accordingly.

10

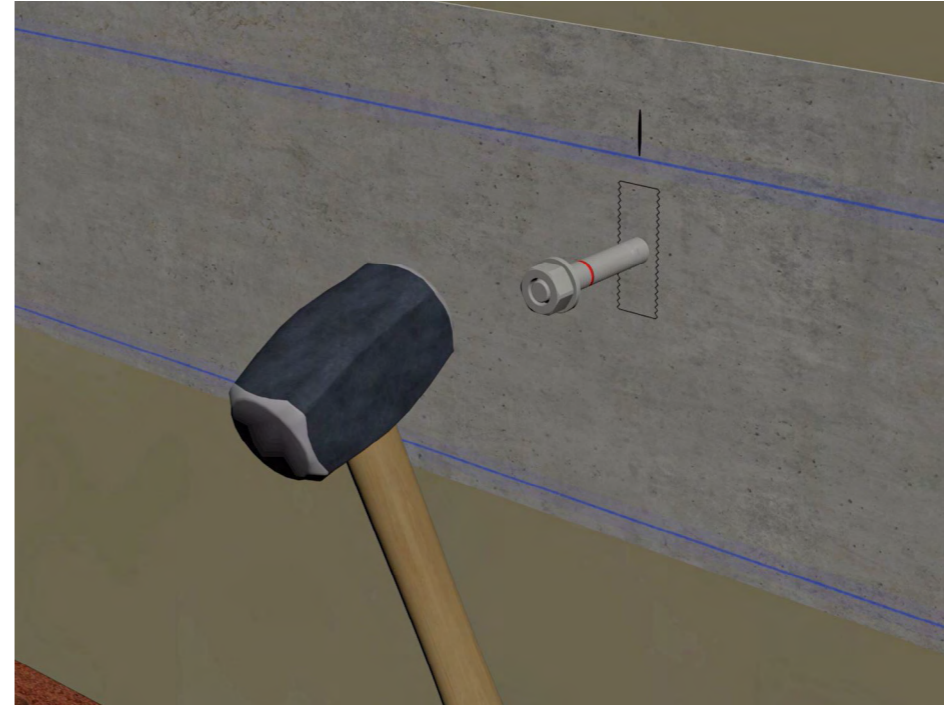
Drill holes



Drill and blow out all of the holes.

11

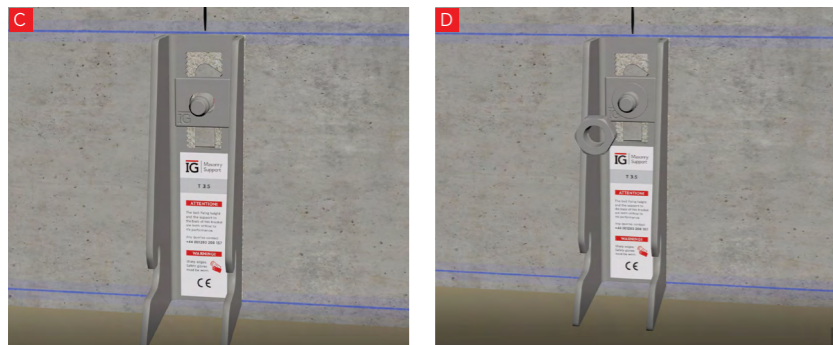
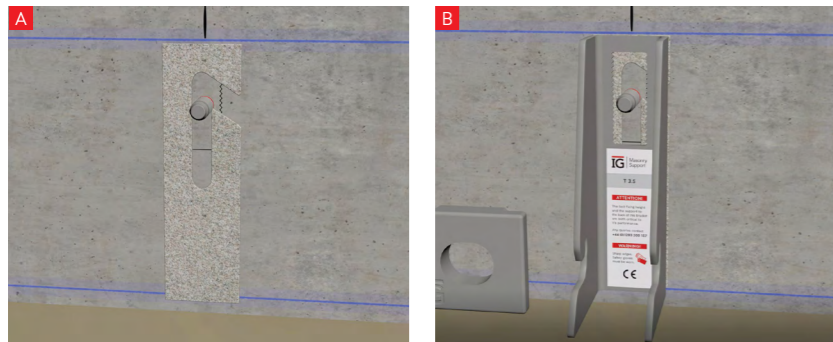
Hammer anchors



Screw nut onto anchor before hammering and keep nut positioned to the outermost part of the anchor to prevent any damage when installing.

Hammer in each anchor with a lump hammer to the specified embedment depth.

12 Offer up further components

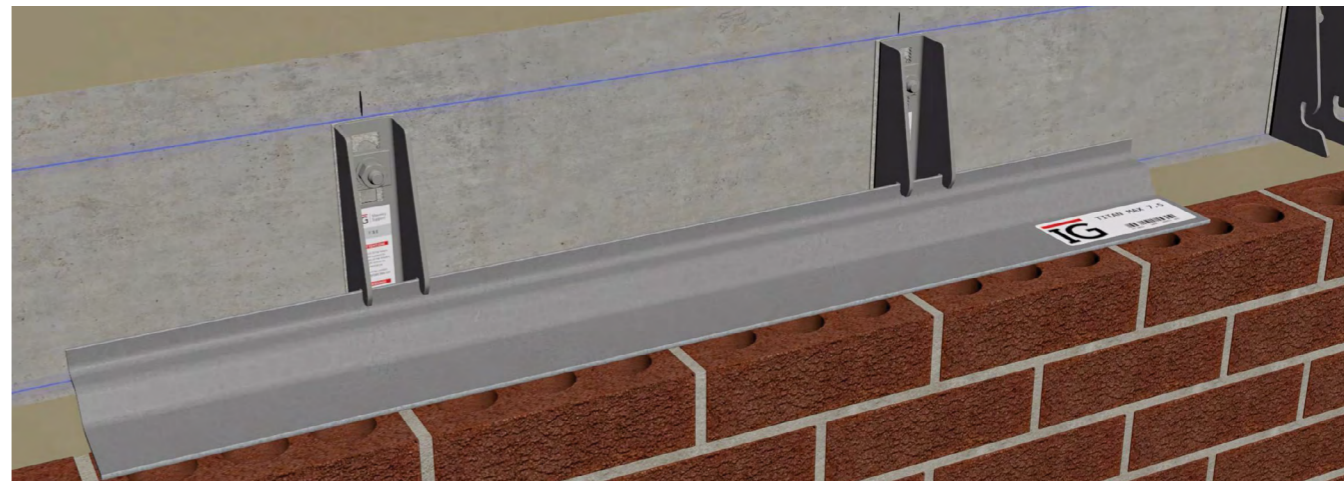


Offer up the shim, bracket, lock washer, washer and nut, and finger tighten.

(Use a spanner if required)

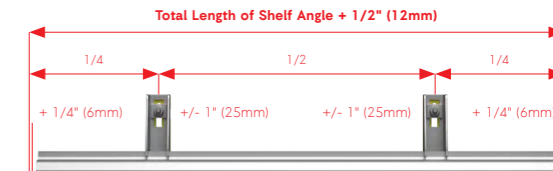
- A** Shim
- B** Bracket
- C** Lock Washer
- D** Washer & Nut

13 Front-load shelf angles



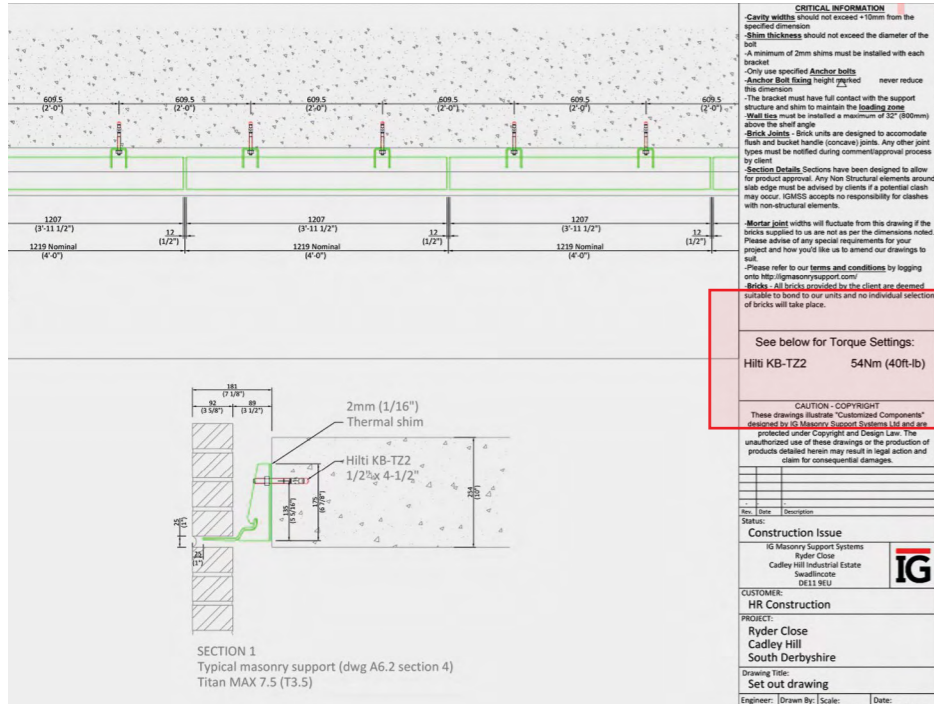
Front-load all shelf angles checking that the alignment is correct and ensure that the shelf is positioned correctly on the brackets.

Use the 1/4 - 1/2 - 1/4 rule as specified in our Product Guide.



14

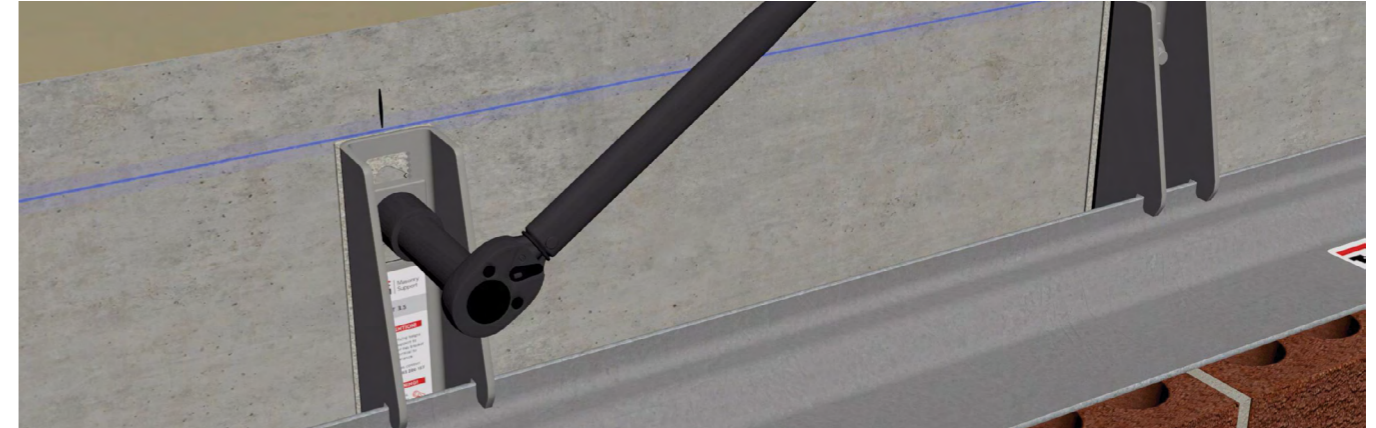
Adjust torque wrench



Refer to Set Out Drawings or anchor box for the correct torque settings and adjust torque wrench to suit.

15

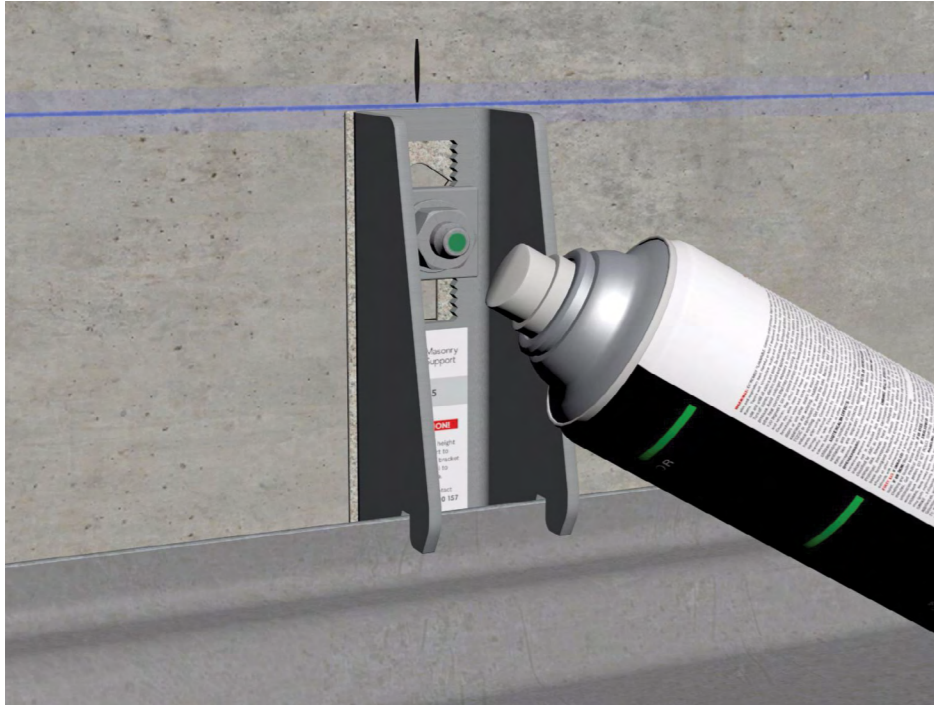
Torque anchors



Torque the full run of anchors using a calibrated torque wrench set to the correct torque settings.

16

Torque confirmation

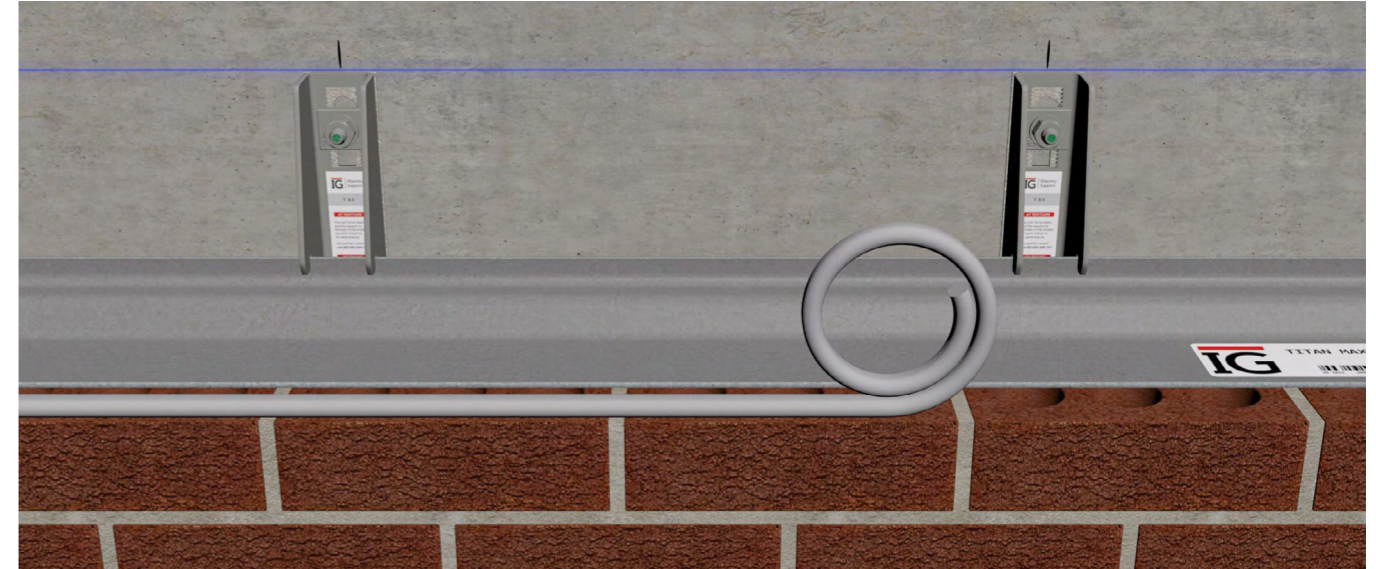


Spray the head of the anchor as you go along, confirming they have been tightened to required torque setting and installation of component is complete.

Once torqued,
you must not re-torque.

17

Insert foam rod



Insert foam rod to the underside of the masonry support shelf to allow thermal expansion and movement of the brickwork. A lipped brick may be installed to reduce the overall height of this caulk joint.



This concludes the installation of TITAN MAX.

Continuation of higher-level brickwork can commence. Please refer to TITAN MAX Product Guide for 'Required Building Method'.

The IG Masonry Support Technical Team is on hand to provide assistance during the installation of TITAN MAX. To receive support, please call **T +1 302 303 5410** or email inquiries@igmasonrysupport.com

Additional installation materials



For a video Installation Guide, please visit igmasonrysupport.com or scan the QR code. Alternatively please refer to the supporting documentation supplied with this guide.

IG | Masonry Support

North America

108 Lakeland Avenue
Dover, Delaware
United States
DE 19901

—

T +1 302 303 5410
inquiries@igmasonrysupport.com

igmasonrysupport.com