

A nighttime architectural rendering of the Massey Music Hall, a large brick building with a prominent pediment and arched windows. The building is illuminated from within, and a red neon sign above the entrance reads "MASSEY HALL". To the right, a red neon sign for "Fran's Restaurant" is visible. A crowd of people is gathered on the sidewalk in front of the building. The sky is a deep blue, and a modern glass building is visible in the background.

IG | Masonry Support

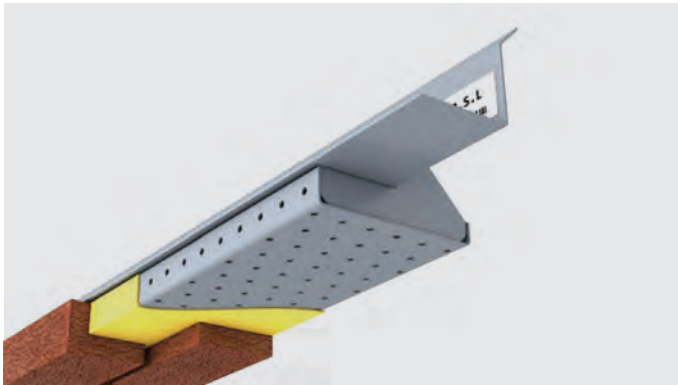
## Signature Projects

North America

[igmasonrystsupport.com](http://igmasonrystsupport.com)



Photo credit: Massey Hall



A \$184 million refurbishment and extension of the landmark Massey Hall. The project required a brick slip lintel solution featuring Ibstock brick manufactured in England. The lintels support a large span opening, as well as achieving a floating brickwork soffit.

The specified product needed to blend seamlessly with surrounding brickwork whilst disguising roller shutter door mechanics located at the venue's delivery entrance. The specified lintel system also needed to be removable to allow service access to the door's mechanical element.

Scan to read  
our full case study



**Location**

Ontario, Canada

—

**Architect**

KPMB Architects

**Contractor**

Ellis Don

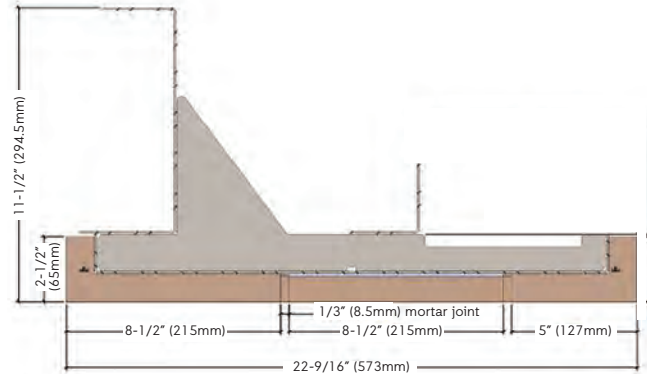
—

**Brickwork Contractor**

Clifford Restoration Limited

**IG Products**

- Brick Slip Lintels with Rowlock Bond Pattern
- Heavy-duty Brick Slip Lintels to suit 116-1/3" (2954mm) openings
- Brick Slip Lintels to suit 47" (1194.5mm) openings
- Additional Brick Slips cut to 1" (25mm) thick





IG's high-performance, off-the-shelf, complete masonry support solution was supplied to this new six-storey condo development in Whitby.

**Location**

Ontario, Canada

**Developer**

Kiya Development

**IG Products**

TITAN MAX

**Architect**

Cianfrone Architect Inc

**General Contractor**

Gay Company Limited

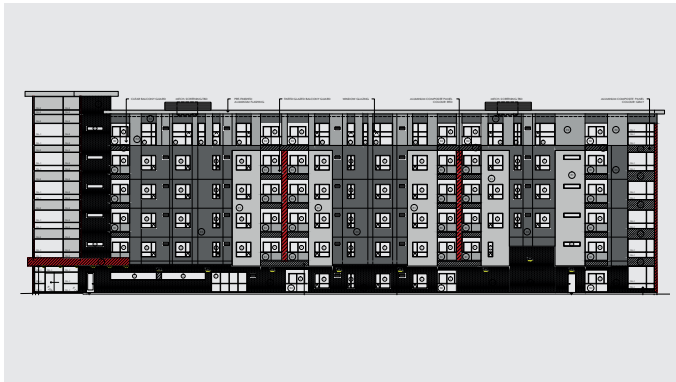




Photo credit: JJ Operating

A 12-storey modern tower in Manhattan requiring 10,240m of shelf angle support. IG is a one-stop solution with ease of installation.

**Location**

Chelsea, Manhattan

**General Contractor**

Breeze

**IG Products**

TITAN MAX &  
Dropper Welded  
Masonry Support

**Architect**

FXCollaborative

**Brickwork Contractor**

Bunlin LLC

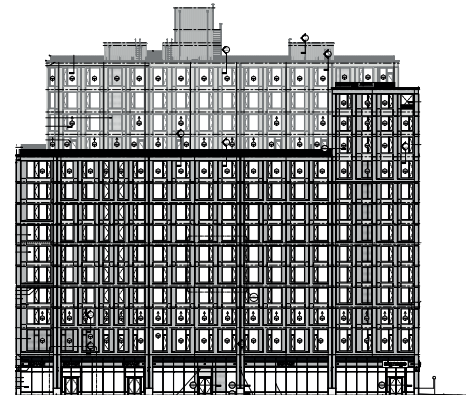




Photo credit: Morley Hoppner Limited



IG supplied adjustable, inverted Welded Masonry Support for a 6-storey senior residents accommodation in Ottawa, Canada.

**Location**

Ottawa, Canada

**General Contractor**

Morley Hoppner Limited

**Architect**

CSV Architects

**IG Products**

Inverted Welded Masonry Support





Photo credit: Kuo Diedrich Chi

IG supplied 59.7m of Welded Masonry Support (WMS) and 58.9m of Brick on Soffit System (B.O.S.S.) as part of a multi-million dollar expansion of the luxury Camp Creek, Florida development.

**Location**

Florida, US

—

**Architect**

Kuo Diedrich Chi

**Developer**

St. Joe Company

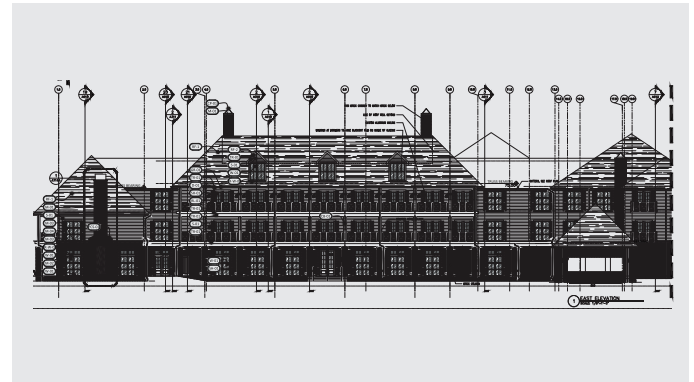
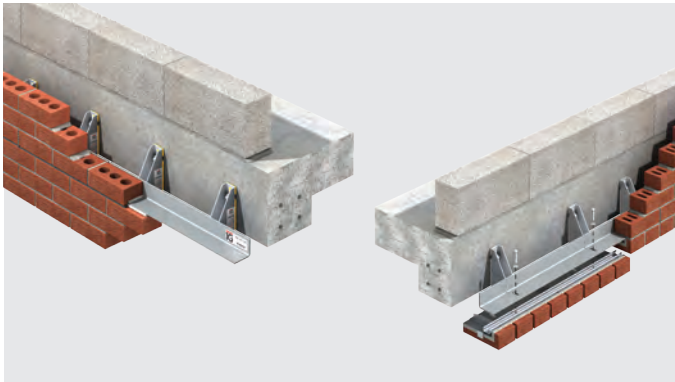
—

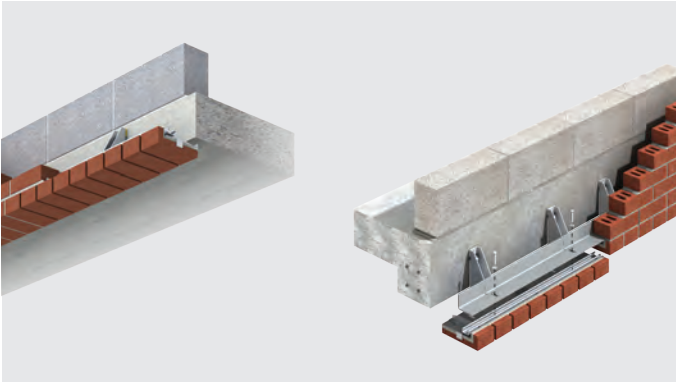
**General Contractor**

Cardella Construction

**IG Products**

Welded Masonry Support & B.O.S.S. (Brick on Soffit System)





IG supplied Welded Masonry Support (WMS) and Brick on Soffit System (B.O.S.S.) for a local architect's private dwelling in the heart of Toronto.

#### Location

Ontario, Canada

—

#### Architect

KPMB Architects

#### IG Products

Welded Masonry  
Support & B.O.S.S.  
(Brick on Soffit System)

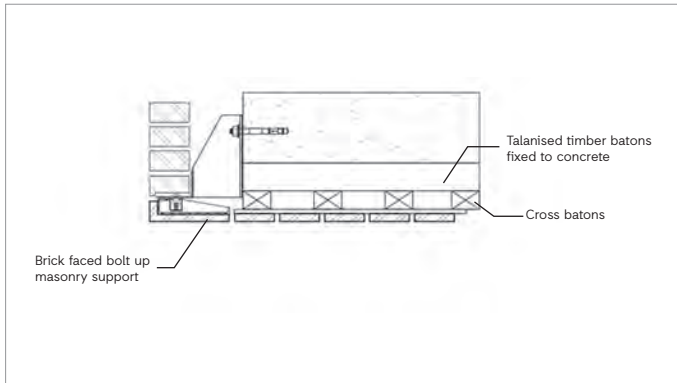


Photo credit: Matt Wilson, KPMB Architects



Photo credit: Dattner Architects

A mixed-use development requiring IG's masonry support solutions combined to support the development and re-use of the early 1900s landmarked Empire State Dairy complex.

**Location**

New York, US

**Architect**

Dattner Architects

**IG Products**

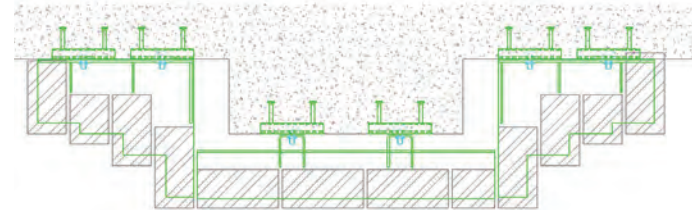
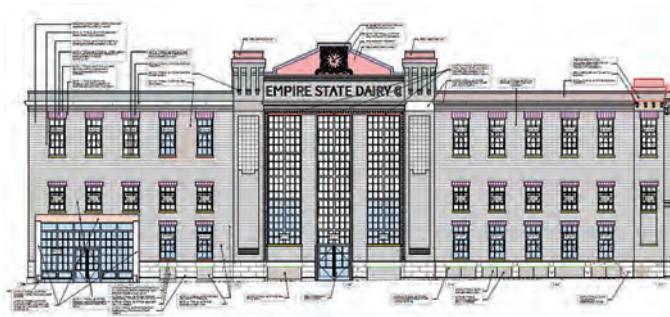
TITAN MAX, Welded  
Masonry Support &  
Cast-in Channel

**General Contractor**

ZDG Construction  
Management

**Brickwork Contractor**

Sandstone Structures



Plan view of masonry support shelf angle and fixings.



Photo credit: J Frankl C Mallea Associates

A new 7-storey residential building supplied with a large range of IG's off-site brick slip and masonry support solutions.

**Location**

New York, US

—

**Architect**

J Frankl Architects

**IG Products**

Welded Masonry Support

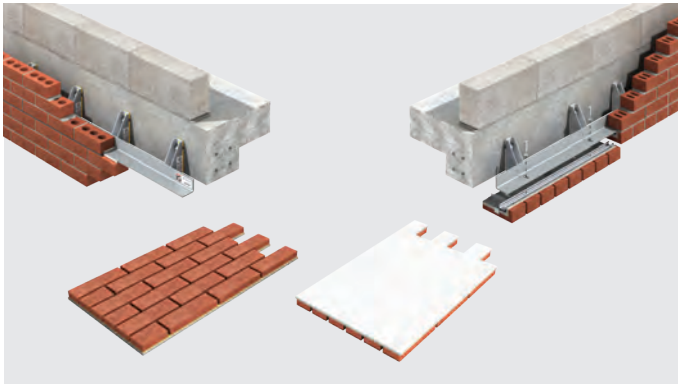
Brick Slip Panels & B.O.S.S.

(Brick on Soffit System)

**Brickwork**

**Contractor**

Reliable Masonry





# IG | Masonry Support

## North America

865 Westney Road South  
Ajax, Ontario  
Canada, L1S 3M4

—  
T +(1) 647 262 6583  
[enquiries@igmasonrystsupport.com](mailto:enquiries@igmasonrystsupport.com)

## Great Britain

Cadley Hill Industrial Estate  
Ryder Close, Swadlincote  
South Derbyshire, DE11 9EU

—  
T +44 (0)1283 200 157  
[support@igmasonrystsupport.com](mailto:support@igmasonrystsupport.com)

## Ireland

Ballyreagh Industrial Estate  
Sandholes Road, Cookstown  
County Tyrone, BT80 9DG

—  
T +44 (0)28 8676 0334  
[info@igmasonrystsupport.com](mailto:info@igmasonrystsupport.com)

